

*The Trails*

— of —

COUNTRY LANE

A COLLECTION OF FREEHOLD TOWNS  
AND DETACHED HOMES

 ANDRIN



*The Trails*  
of  
COUNTRY LANE

The **Trails** of **Country Lane** is an exciting community that is the ideal place for families.

We all have a dream that defines what we want for our family home – aesthetically inspiring spaces that afford both functionality and that unmistakable feeling that this is where you belong.

At Andrin Homes we have built our reputation on meeting and exceeding our customer's expectations – creating beautiful homes that embrace your every need through unsurpassed living environments.

Quality defines our methods – integrity guides our hand in everything we do.

**Discover the Andrin Advantage.**



 **ANDRIN**



Protected Parklands

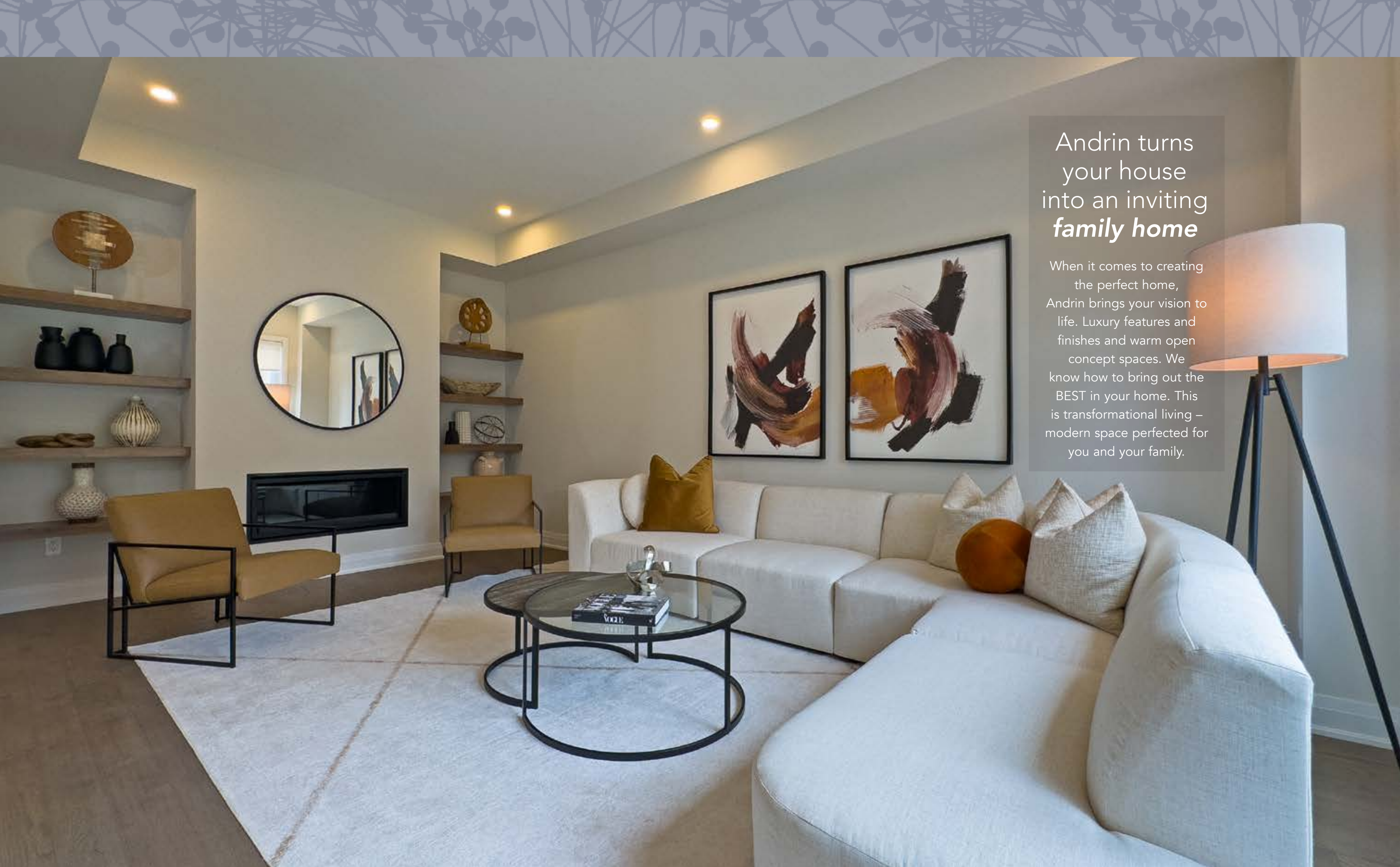


## Be *Neighbours* With *Nature*

Your home at Country Lane has been designed to please your family, and so has the entire community. The nearby area offers wonderful neighbourhood parks made for family fun, featuring playgrounds, sports fields, picnic areas and green space galore. Not only that, but you're just steps from the 950 acres of protected parklands at Heber Down Conservation Area, and the 68 km of recreational trails that wind through and connect to Whitby's extensive trail network.



*The Trails*  
— of —  
COUNTRY LANE



Andrin turns  
your house  
into an inviting  
*family home*

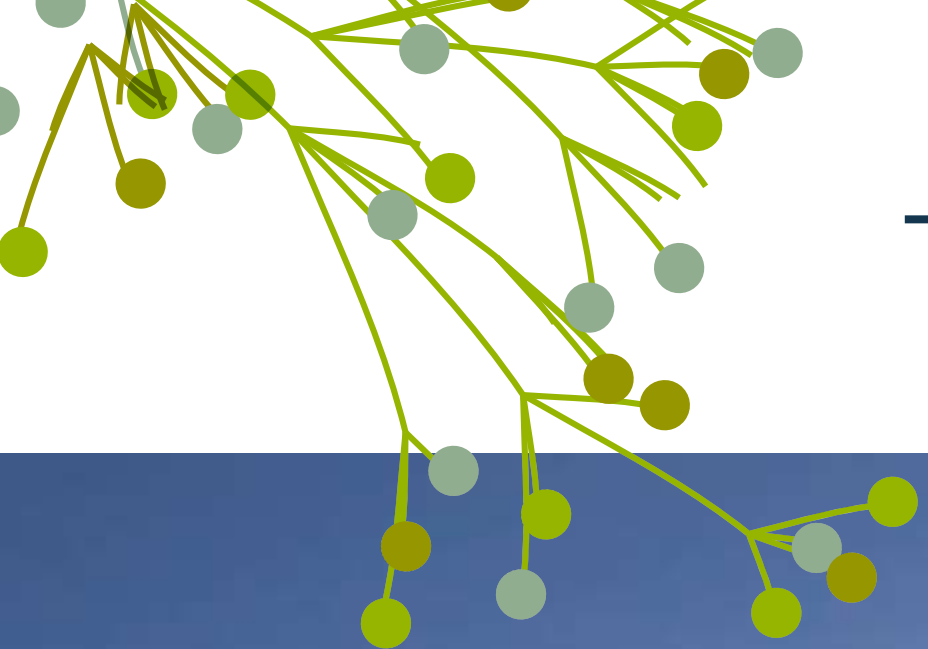
When it comes to creating the perfect home, Andrin brings your vision to life. Luxury features and finishes and warm open concept spaces. We know how to bring out the BEST in your home. This is transformational living – modern space perfected for you and your family.



Modern *family* life  
revolves around  
the *kitchen*

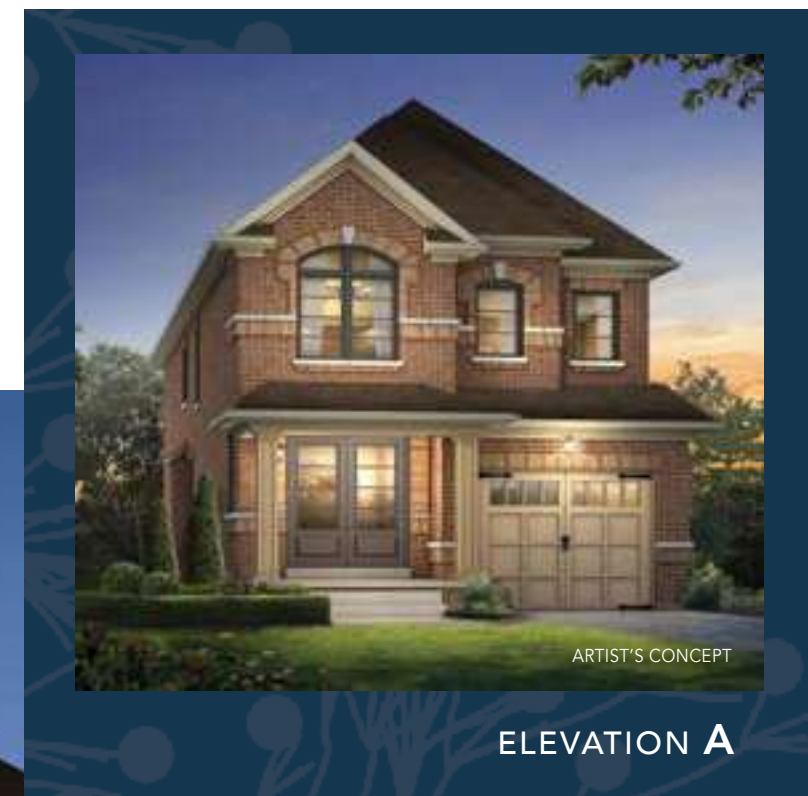
It has been said that the kitchen is the true heart of a home. Whether during the morning dash or a leisurely dinner, this is the central place where everyone comes together.

Our gourmet eat-in kitchens are open and spacious. Enjoy the designer beauty of the sleek custom cabinetry, extended breakfast bars, granite countertops, backsplashes – or just grab and go with the snacks from the walk-in pantry.



# The Adele (26-1)

ELEVATION **A** – 4 BEDROOM – **2,023** SQ. FT.  
ELEVATION **B** – 4 BEDROOM – **2,023** SQ. FT.  
ELEVATION **C** – 4 BEDROOM – **2,027** SQ. FT.



# The Adele

(26-1)

ELEVATION A, B  
4 BED – 2,023 SQ. FT.

ELEVATION C  
4 BED – 2,027 SQ. FT.



ELEVATION A

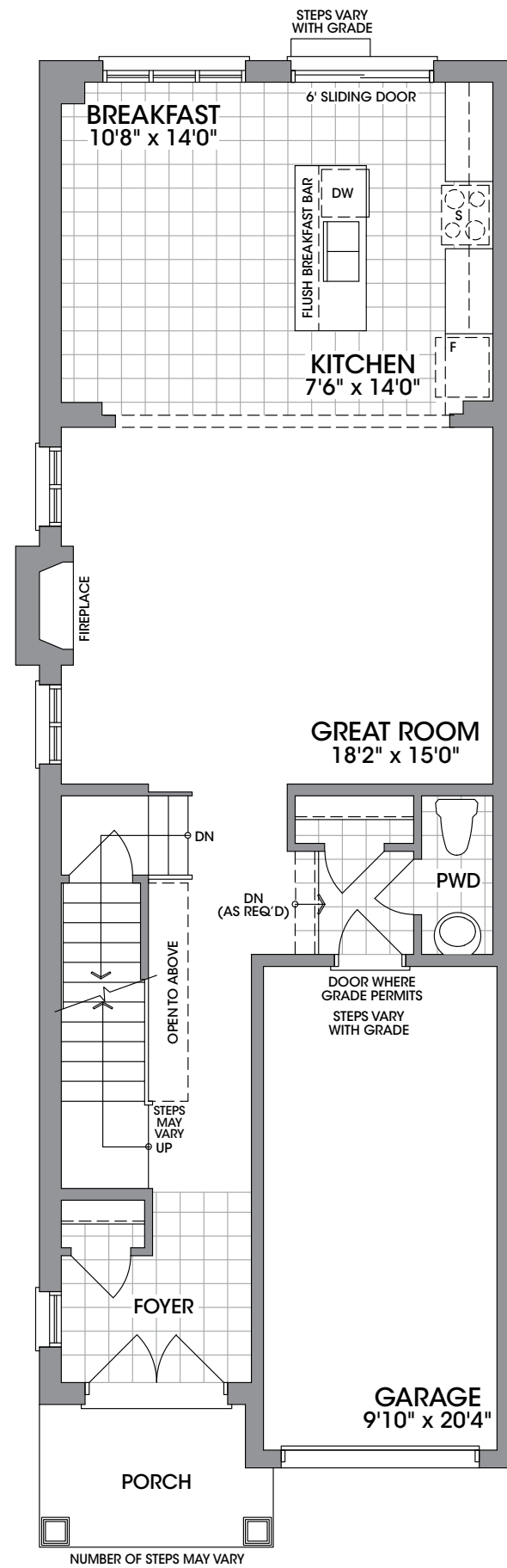


ELEVATION B

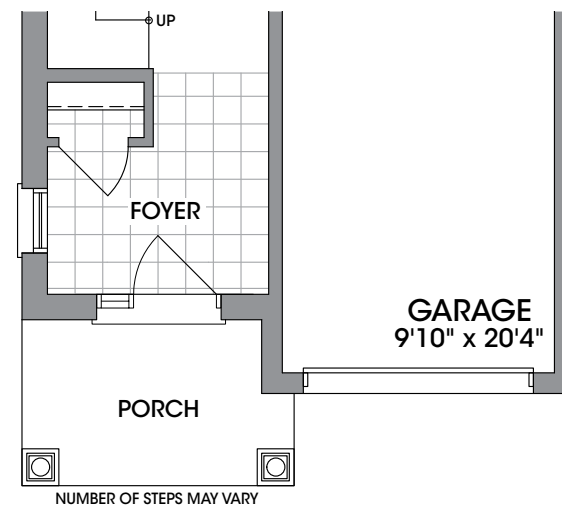


ELEVATION C

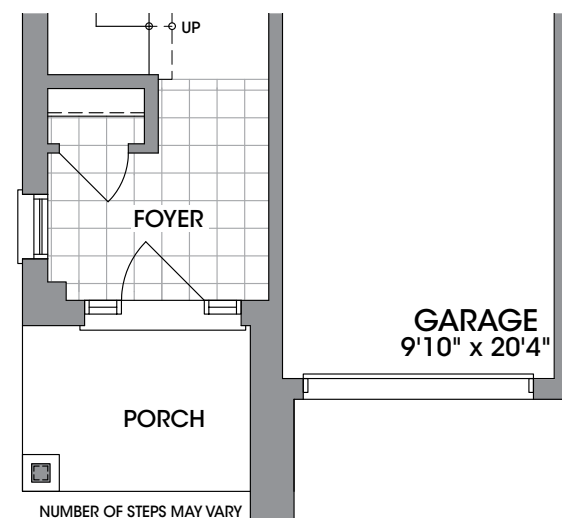
*The Trails*  
of  
COUNTRY LANE



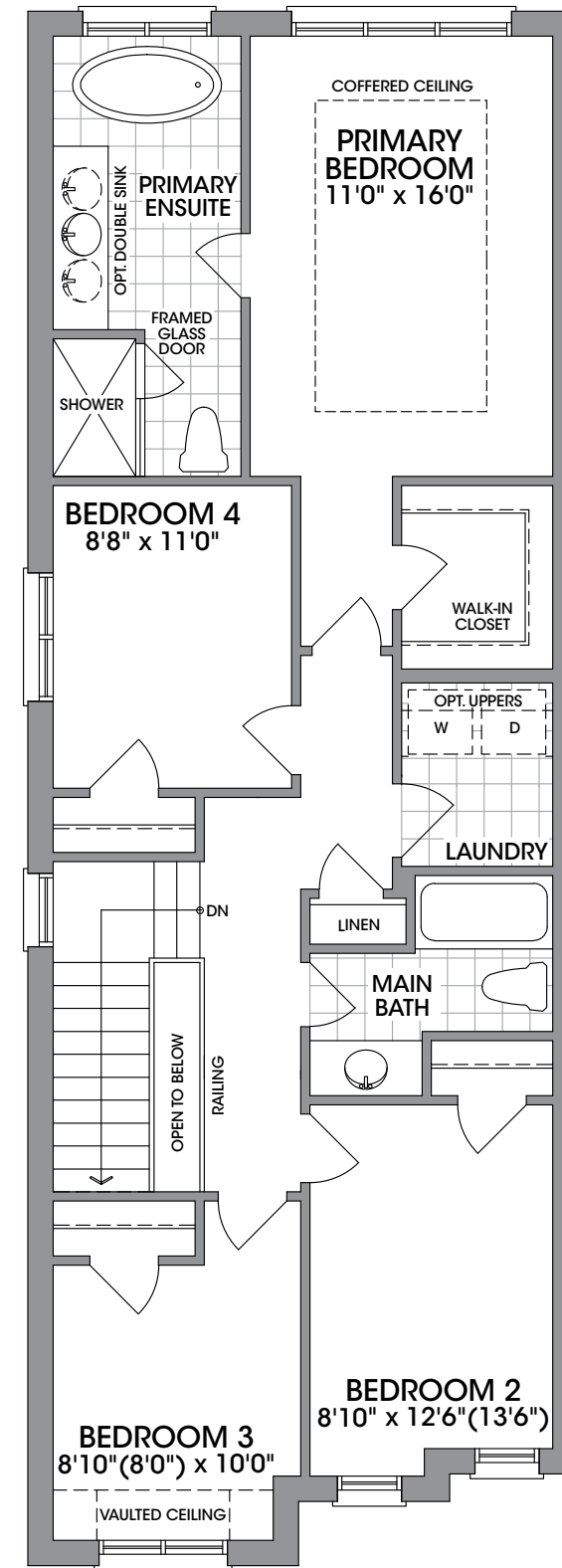
MAIN LEVEL  
ELEVATION A



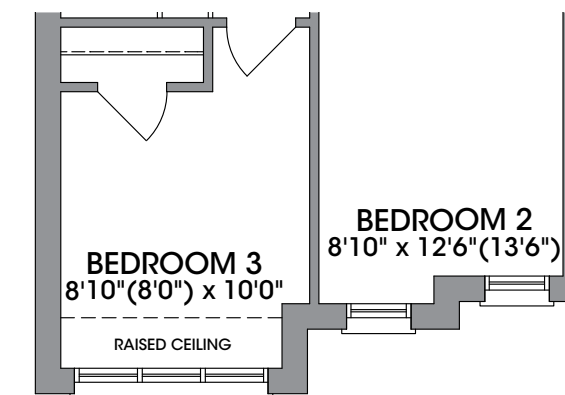
MAIN LEVEL  
ELEVATION B



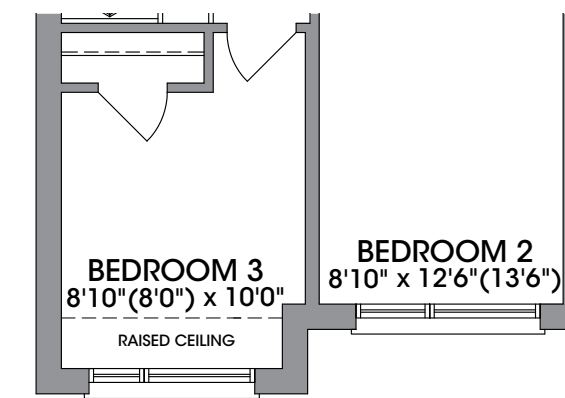
MAIN LEVEL  
ELEVATION C



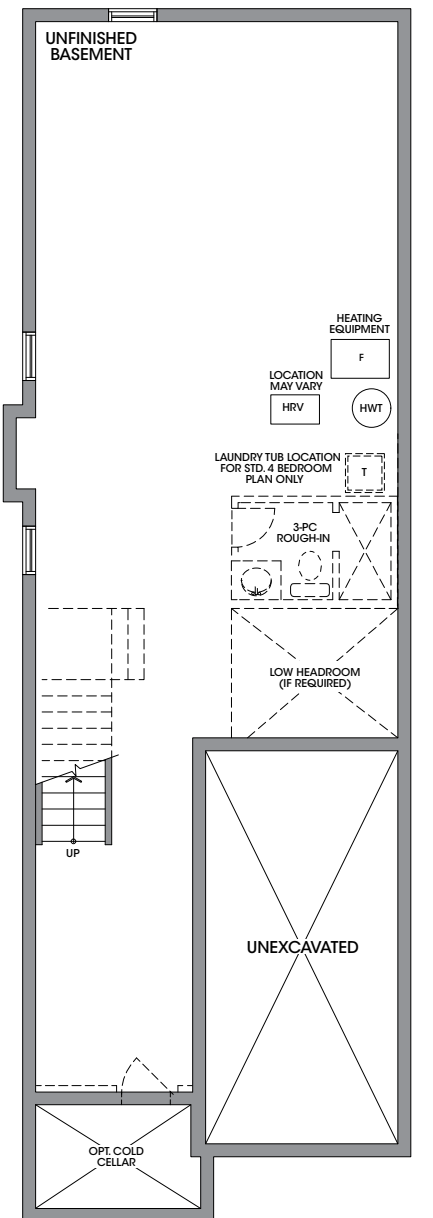
UPPER LEVEL  
ELEVATION A



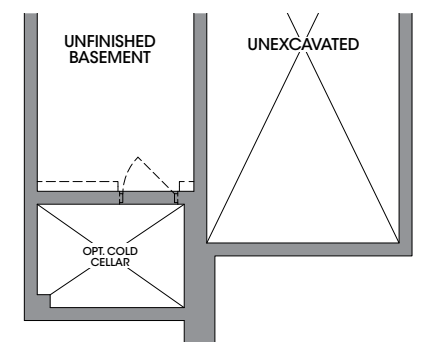
UPPER LEVEL  
ELEVATION B



UPPER LEVEL  
ELEVATION C



BASEMENT  
ELEVATION A & B



BASEMENT  
ELEVATION C

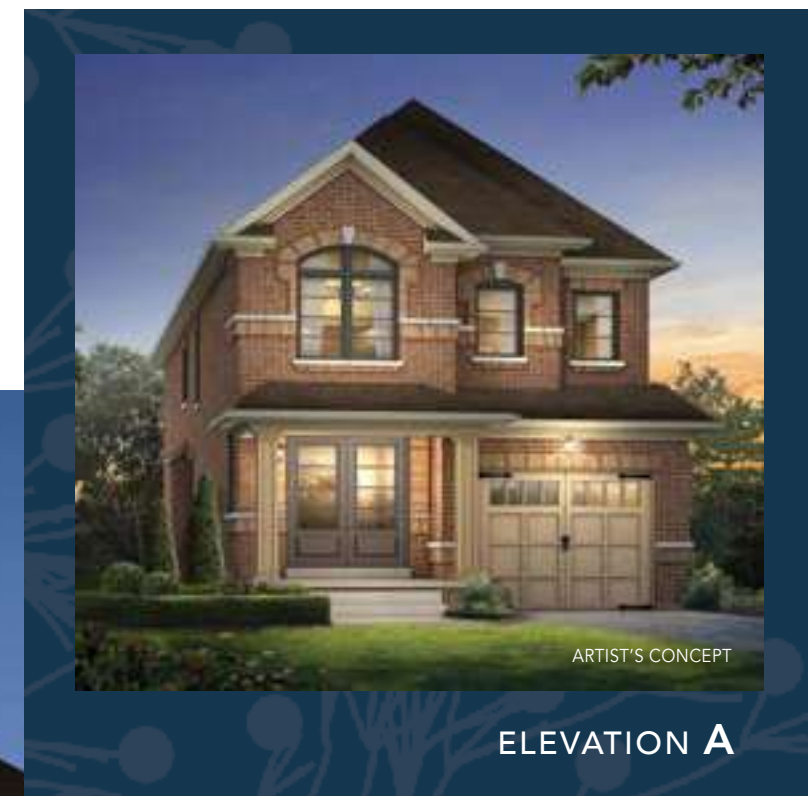
**FLOORPLANS & ELEVATIONS ARE FINAL AND NOT SUBJECT TO CUSTOMIZATION AT TIME OF SALE OR THROUGH THE DECOR STUDIO** Floorplans and elevations are not to scale and subject to architectural review/revision including without limitation, the house being constructed with a layout that is the reverse of that set out above. All materials, specifications, details and dimensions, if any, are approximate and subject to change without notice in order to comply with building site conditions and municipal, structural, Vendor and/or architectural requirements. Actual usable floor area may vary from the stated floor area in accordance with the Floor Area Calculations Directive dated February 1, 2021 published by the Housing Construction Regulatory Authority. Location of structural and mechanical elements may vary from what is shown. Bulkheads are not shown on this plan and may be in areas of the Unit as required to provide venting and mechanical systems. Door and window location, type, size, and swing may vary without notice. Homes are sold unfurnished. If applicable, balconies, terraces, and patios, if any, are exclusive use common elements, shown for display purposes only and the location and size are subject to change without notice. E. & O.E. 20231005\_R3\_



INCLUDES  
FINISHED  
AREA IN THE  
BASEMENT

# The Adele Plus (26-1)

ELEVATION **A** – 4 BEDROOM – **2,688** SQ. FT.  
ELEVATION **B** – 4 BEDROOM – **2,688** SQ. FT.  
ELEVATION **C** – 4 BEDROOM – **2,692** SQ. FT.  
(INCLUDES 665 SQ. FT. OF FINISHED AREA IN BASEMENT)



ELEVATION **A**



ELEVATION **B**



ELEVATION **C**

# The Adele Plus

(26-1)

ELEVATION A, B  
4 BED – 2,688 SQ. FT.

ELEVATION C  
4 BED – 2,692 SQ. FT.

(INCL. 665 SQ. FT. FINISHED BSMT.)



ELEVATION A

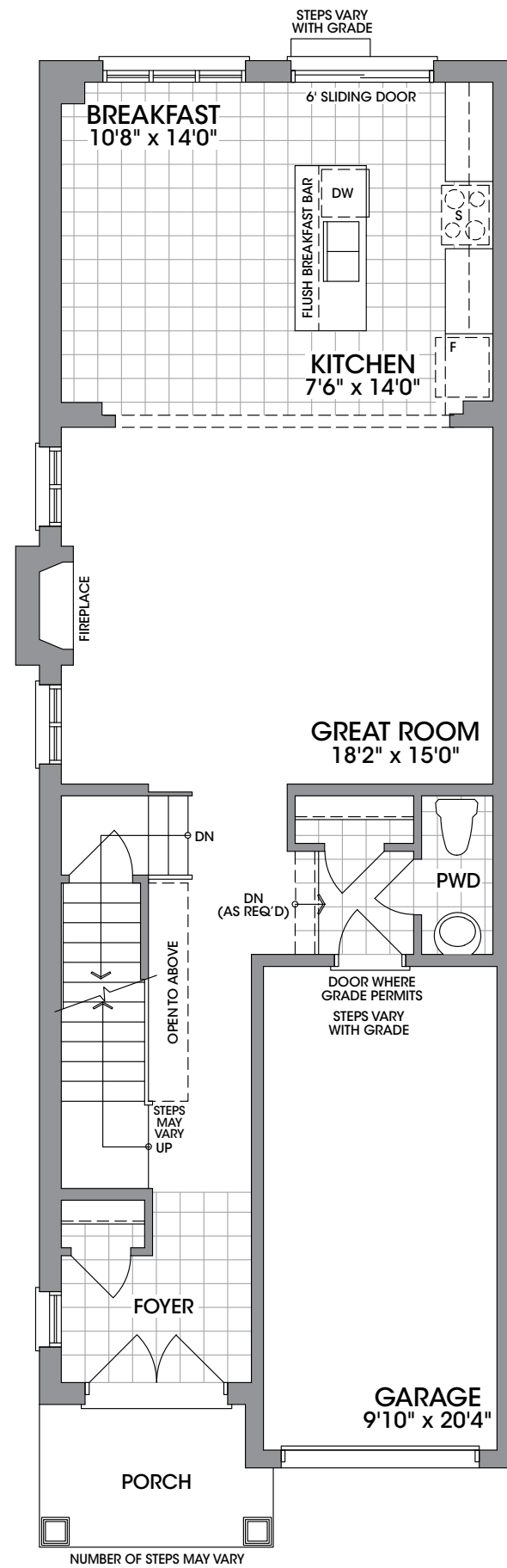


ELEVATION B

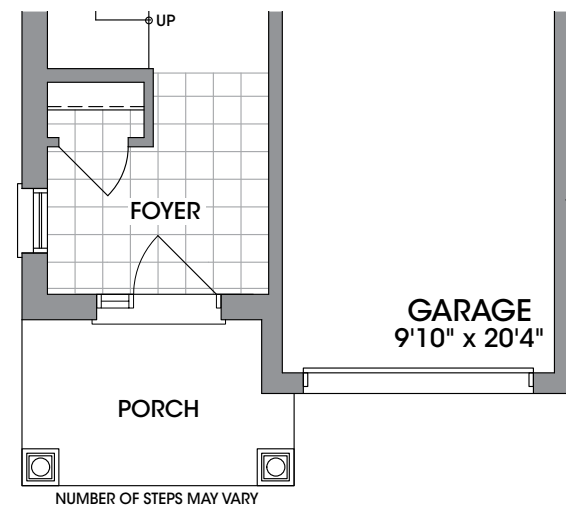


ELEVATION C

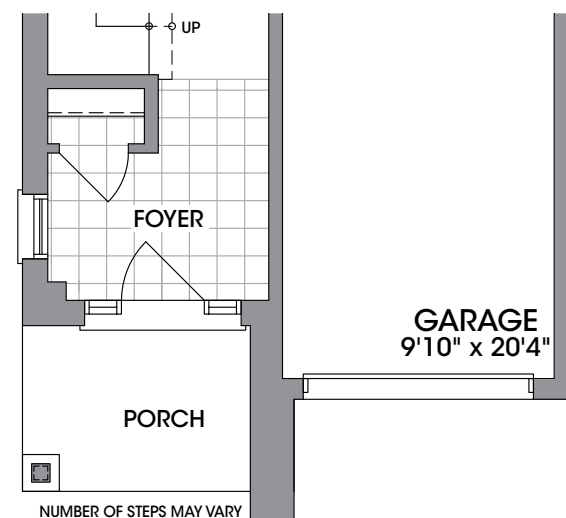
The Trails  
of  
COUNTRY LANE



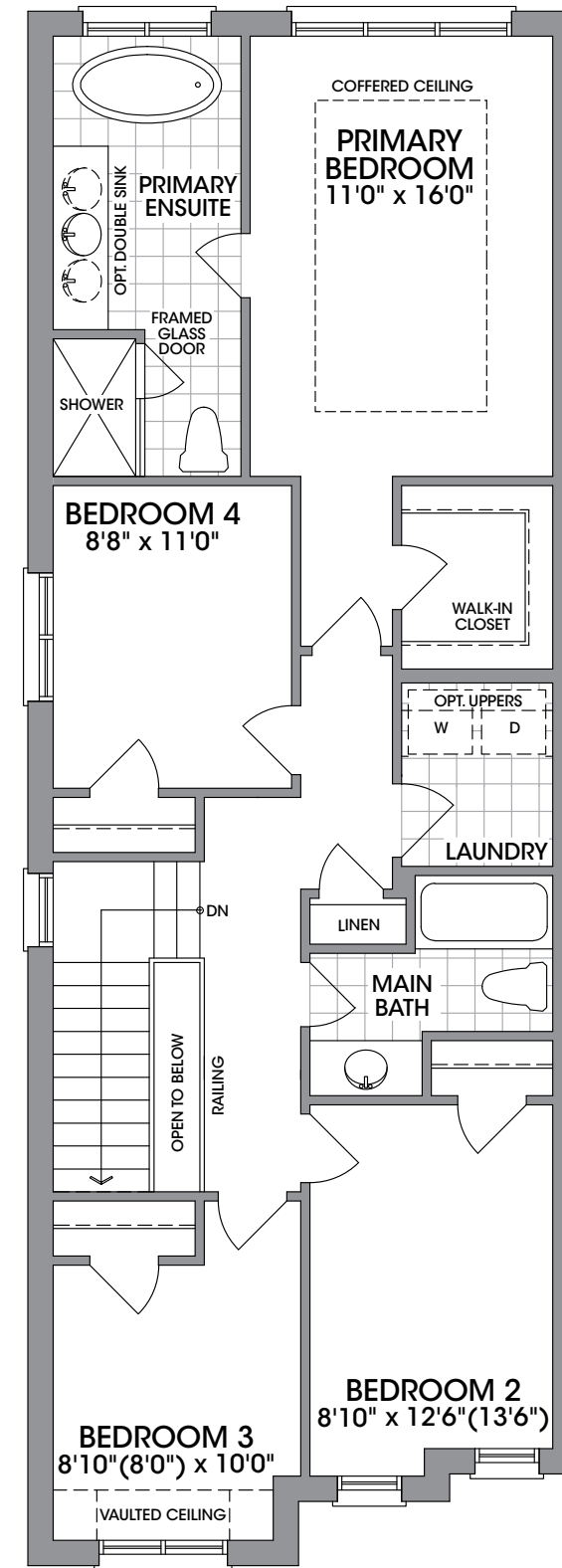
MAIN LEVEL  
ELEVATION A



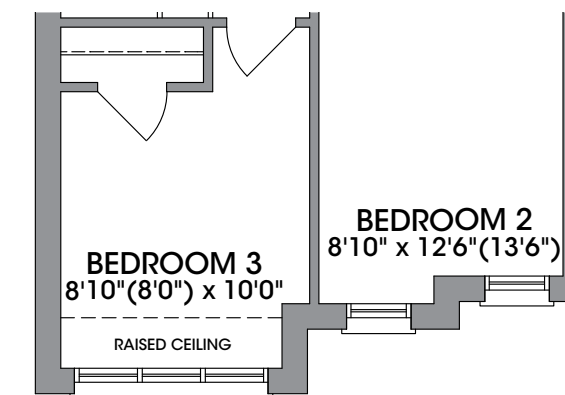
MAIN LEVEL  
ELEVATION B



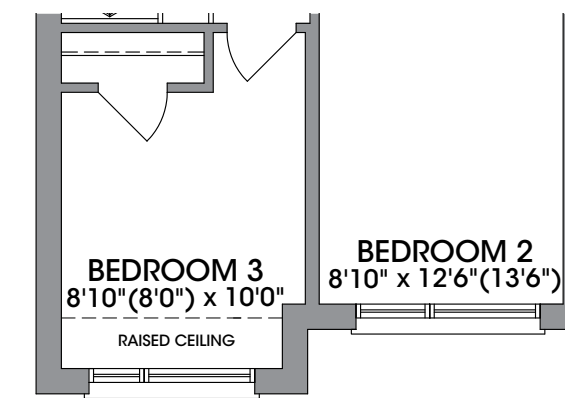
MAIN LEVEL  
ELEVATION C



UPPER LEVEL  
ELEVATION A

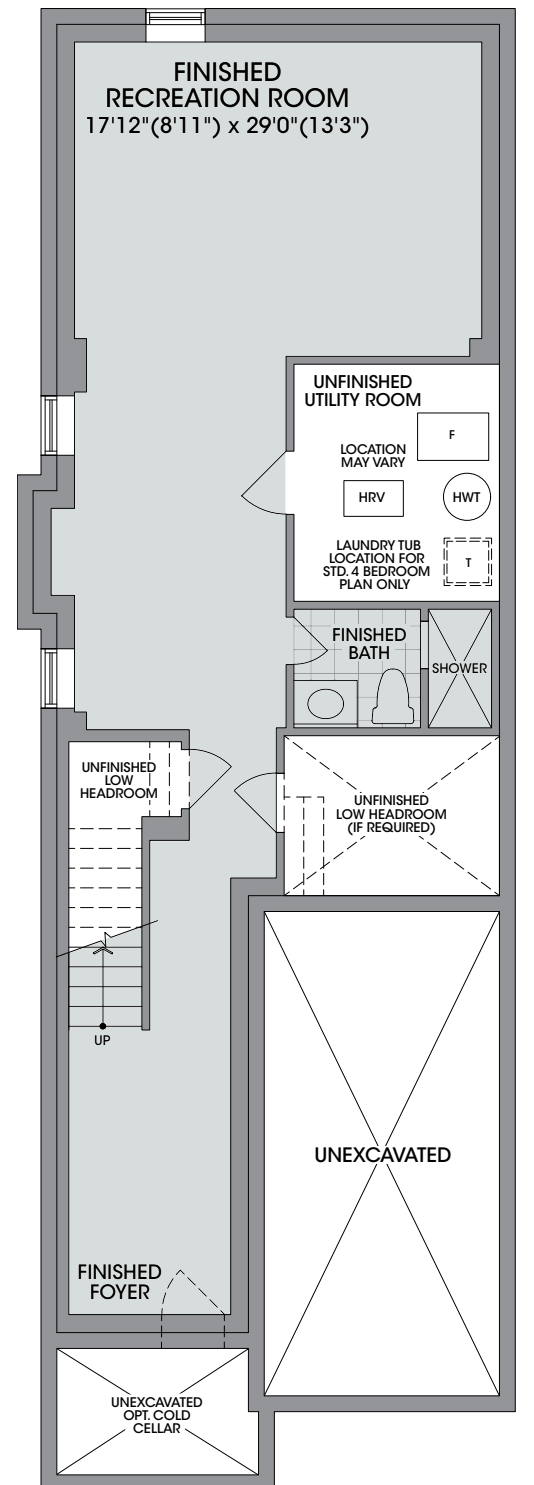


UPPER LEVEL  
ELEVATION B

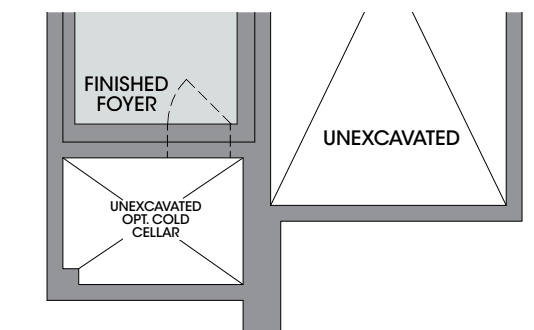


UPPER LEVEL  
ELEVATION C

**INCLUDES  
FINISHED  
AREA IN THE  
BASEMENT**



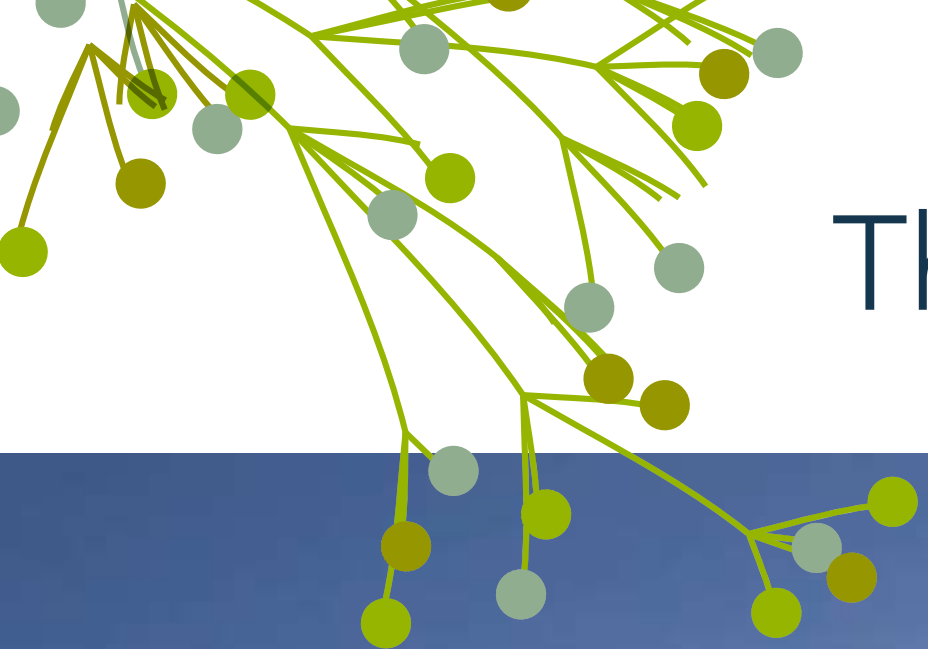
FINISHED BASEMENT  
ELEVATION A & B



FINISHED BASEMENT  
ELEVATION C

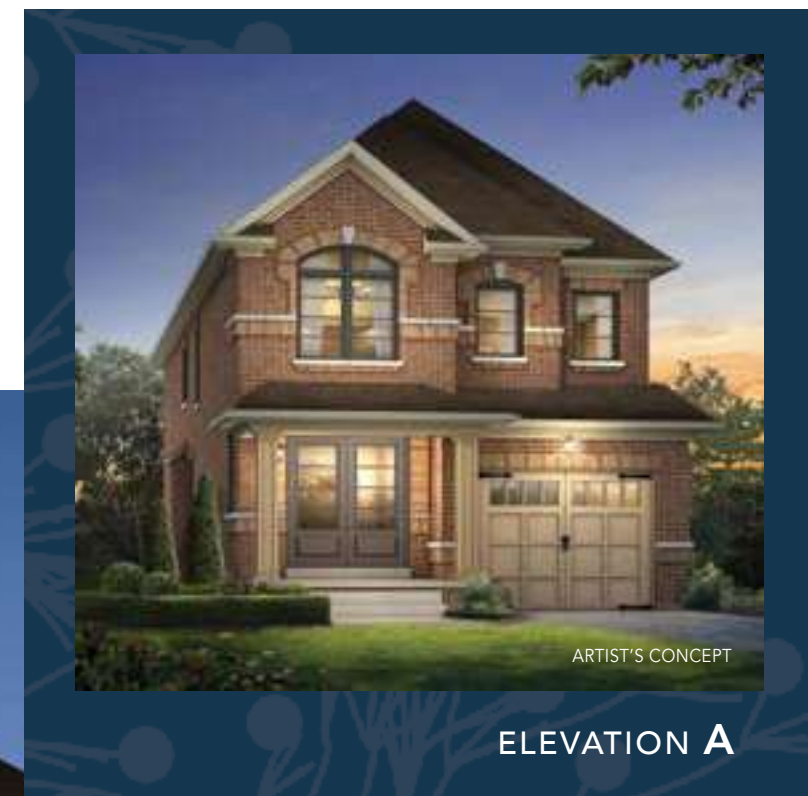
**FLOORPLANS & ELEVATIONS ARE FINAL AND NOT SUBJECT TO CUSTOMIZATION AT TIME OF SALE OR THROUGH THE DECOR STUDIO** Floorplans and elevations are not to scale and subject to architectural review/revision including without limitation, the house being constructed with a layout that is the reverse of that set out above. All materials, specifications, details and dimensions, if any, are approximate and subject to change without notice in order to comply with building site conditions and municipal, structural, Vendor and/or architectural requirements. Actual usable floor area may vary from the stated floor area in accordance with the Floor Area Calculations Directive dated February 1, 2021 published by the Housing Construction Regulatory Authority. Location of structural and mechanical elements may vary from what is shown. Bulkheads are not shown on this plan and may be in areas of the Unit as required to provide venting and mechanical systems. Door and window location, type, size, and swing may vary without notice. Homes are sold unfurnished. If applicable, balconies, terraces, and patios, if any, are exclusive use common elements, shown for display purposes only and the location and size are subject to change without notice. E. & O.E. 20231005\_R3.





# The Adele (26-1 MOD)

ELEVATION **A** – 4 BEDROOM – **1,988** SQ. FT.  
ELEVATION **B** – 4 BEDROOM – **1,988** SQ. FT.  
ELEVATION **C** – 4 BEDROOM – **1,992** SQ. FT.



# The Adele MOD

(26-1 MOD)

ELEVATION A  
4 BED – 1,988 SQ. FT.

ELEVATION B  
4 BED – 1,988 SQ. FT.

ELEVATION C  
4 BED – 1,992 SQ. FT.



ELEVATION A

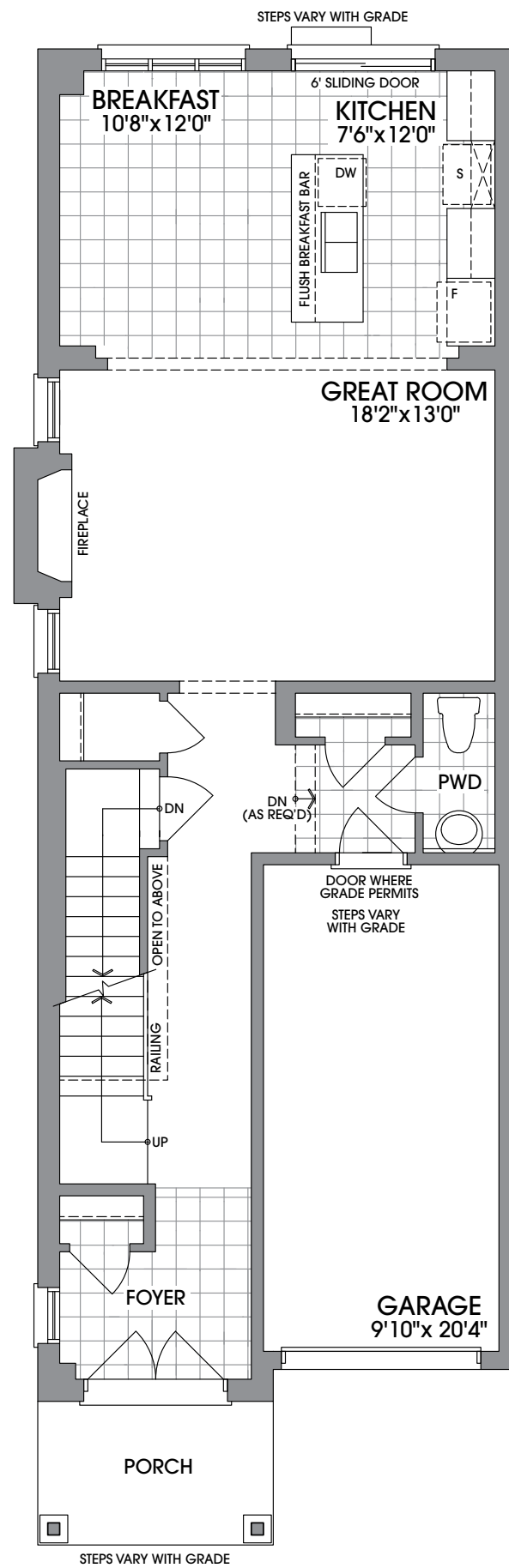


ELEVATION B

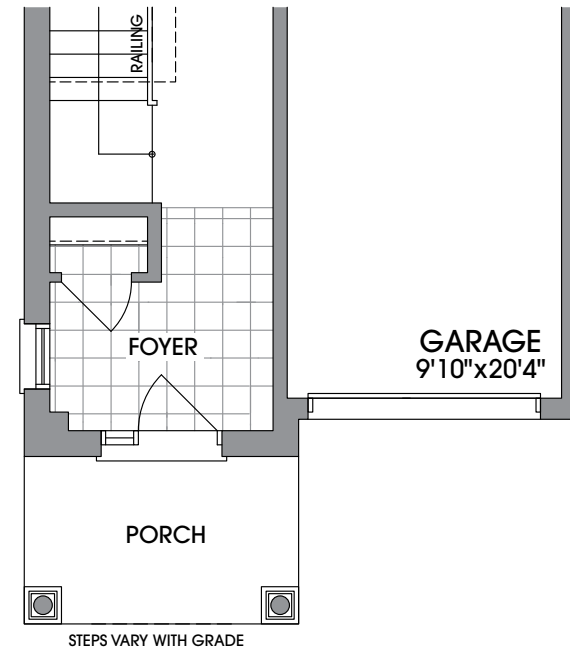


ELEVATION C

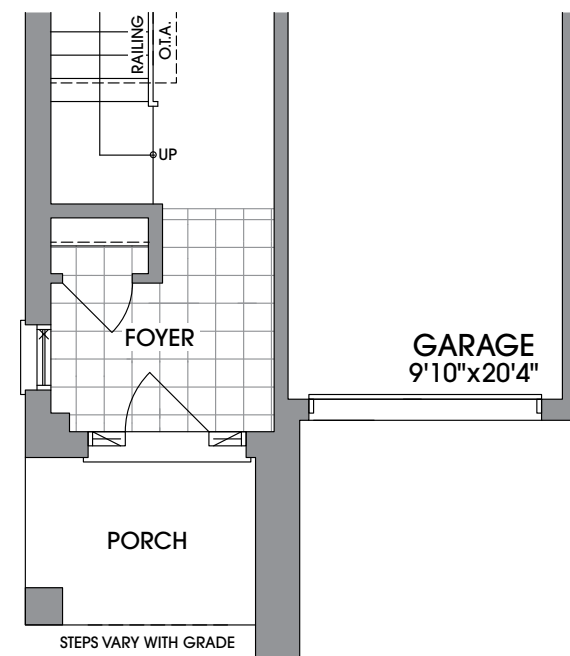
The Trails  
of  
COUNTRY LANE



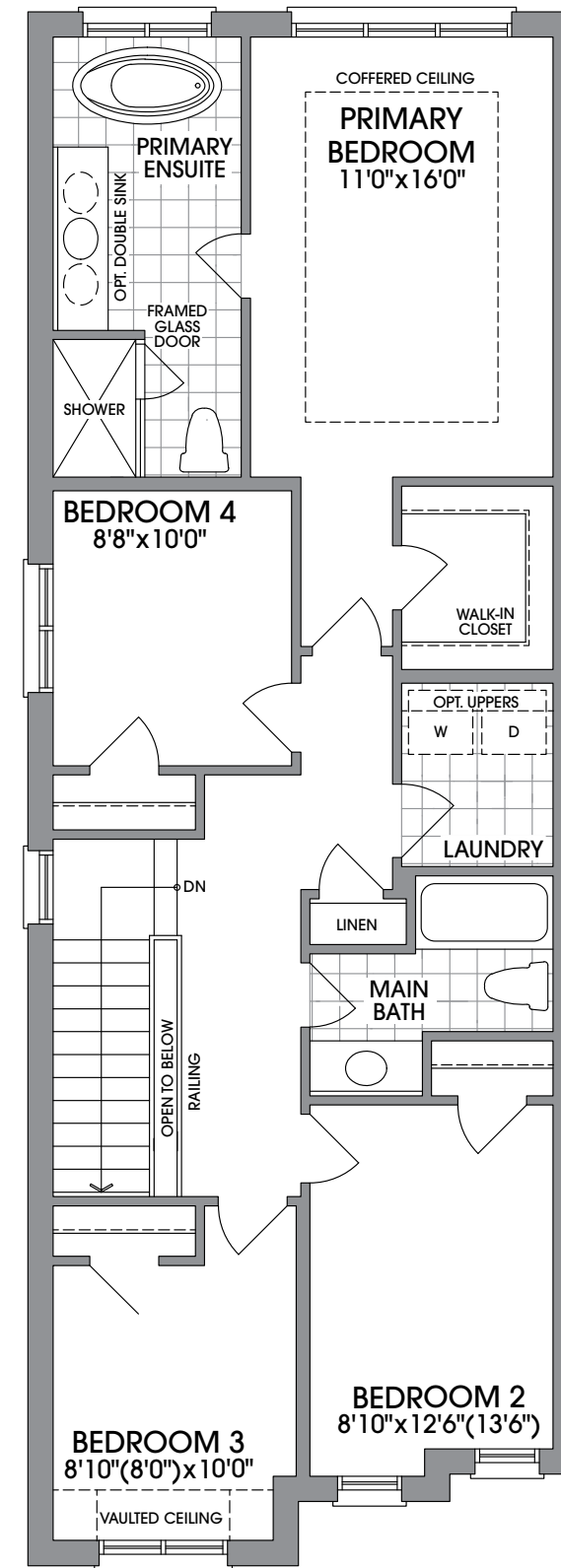
MAIN LEVEL  
ELEVATION A



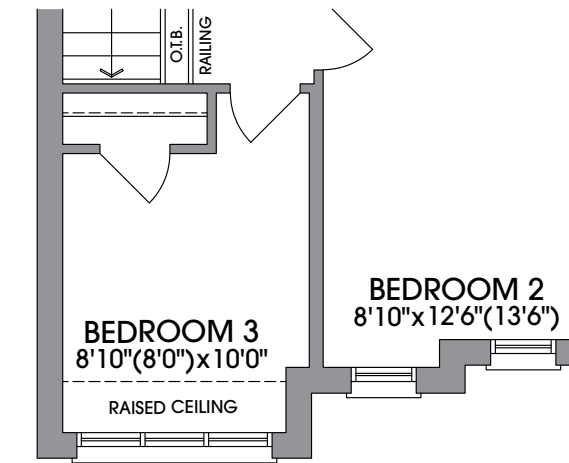
MAIN LEVEL  
ELEVATION B



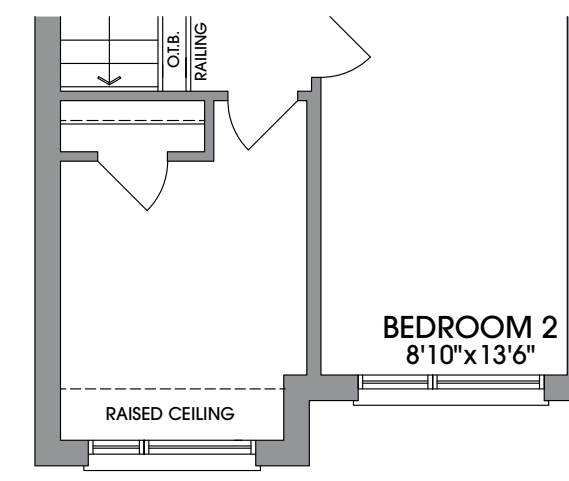
MAIN LEVEL  
ELEVATION C



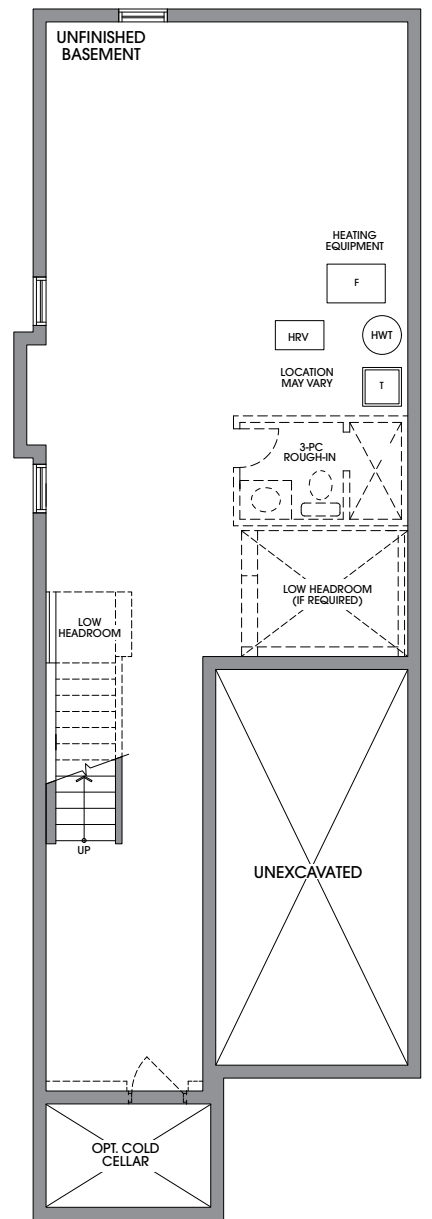
UPPER LEVEL  
ELEVATION A



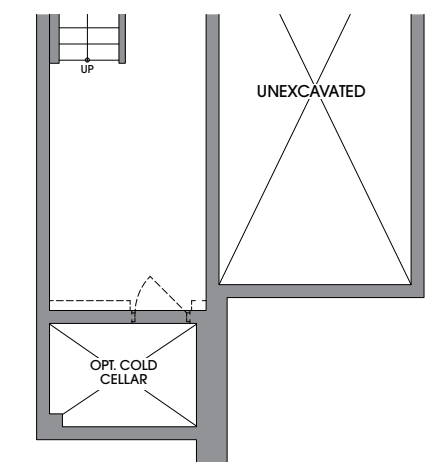
UPPER LEVEL  
ELEVATION B



UPPER LEVEL  
ELEVATION C



BASEMENT  
ELEVATION A & B



BASEMENT  
ELEVATION C

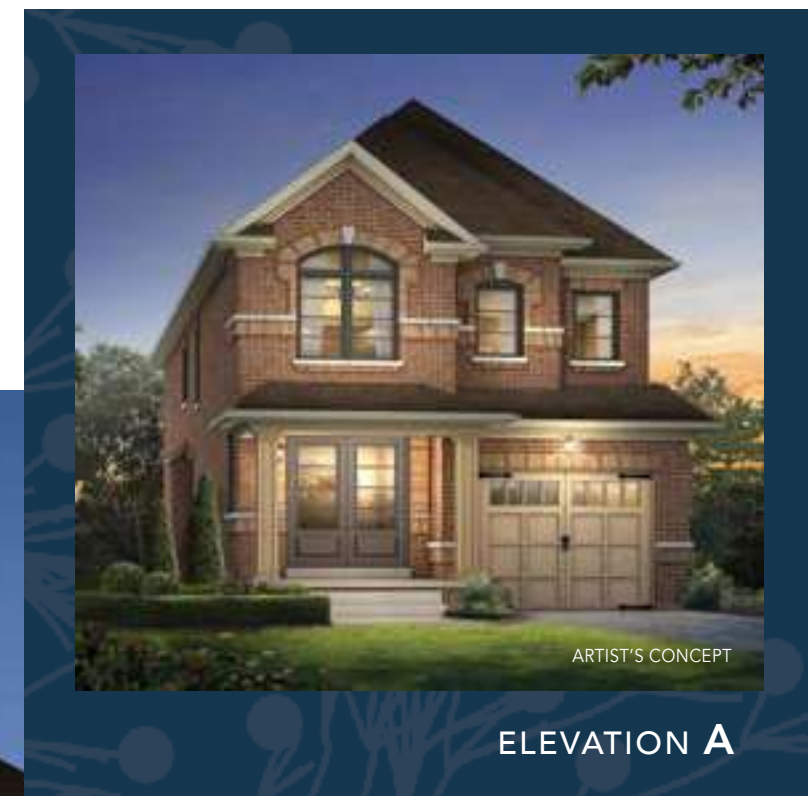
**FLOORPLANS & ELEVATIONS ARE FINAL AND NOT SUBJECT TO CUSTOMIZATION AT TIME OF SALE OR THROUGH THE DECOR STUDIO** Floorplans and elevations are not to scale and subject to architectural review/revision including without limitation, the house being constructed with a layout that is the reverse of that set out above. All materials, specifications, details and dimensions, if any, are approximate and subject to change without notice in order to comply with building site conditions and municipal, structural, Vendor and/or architectural requirements. Actual usable floor area may vary from the stated floor area in accordance with the Floor Area Calculations Directive dated February 1, 2021 published by the Housing Construction Regulatory Authority. Location of structural and mechanical elements may vary from what is shown. Bulkheads are not shown on this plan and may be in areas of the Unit as required to provide venting and mechanical systems. Door and window location, type, size, and swing may vary without notice. Homes are sold unfurnished. If applicable, balconies, terraces, and patios, if any, are exclusive use common elements, shown for display purposes only and the location and size are subject to change without notice. E. & O.E. 20231005\_R3\_



INCLUDES  
FINISHED  
AREA IN THE  
BASEMENT

# The Adele Plus (26-1 MOD)

ELEVATION **A** – 4 BEDROOM – **2,629** SQ. FT.  
ELEVATION **B** – 4 BEDROOM – **2,629** SQ. FT.  
ELEVATION **C** – 4 BEDROOM – **2,633** SQ. FT.  
(INCLUDES 641 SQ. FT. OF FINISHED AREA IN BASEMENT)



ELEVATION **A**



ELEVATION **B**



ELEVATION **C**

# The Adele Plus MOD (26-1 MOD)

ELEVATION A  
**4 BED – 2,629 SQ. FT.**  
 ELEVATION B  
**4 BED – 2,629 SQ. FT.**  
 ELEVATION C  
**4 BED – 2,633 SQ. FT.**  
 (INC. 641 SQ. FT. FINISHED BSMT.)



ELEVATION A

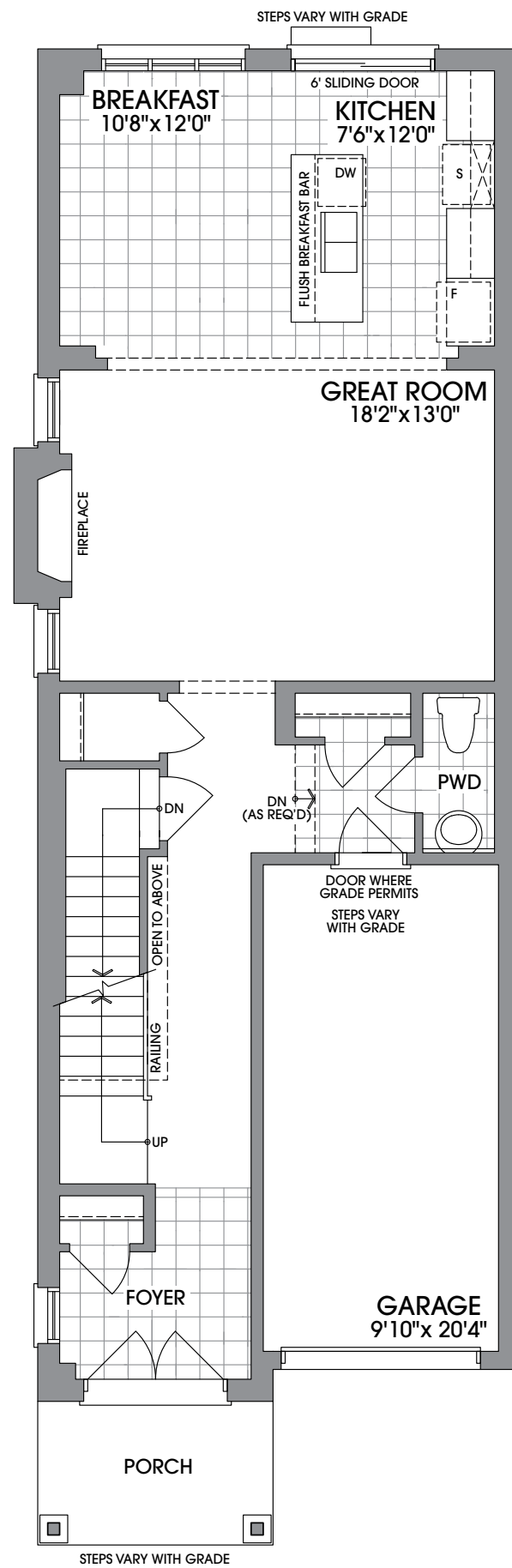


ELEVATION B

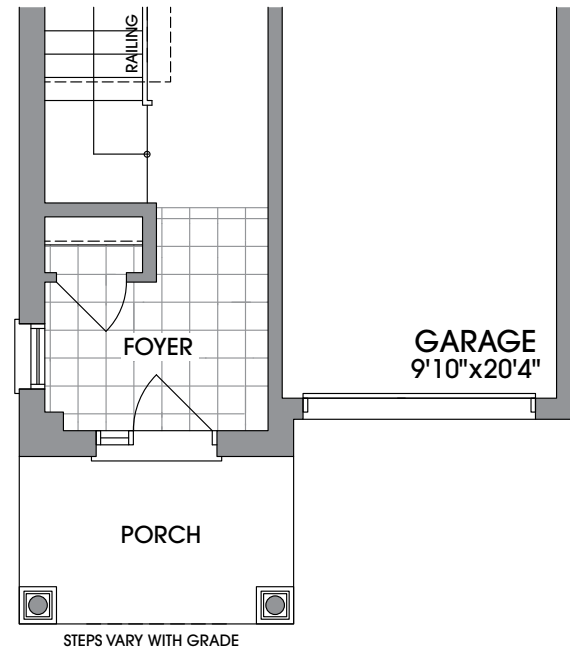


ELEVATION C

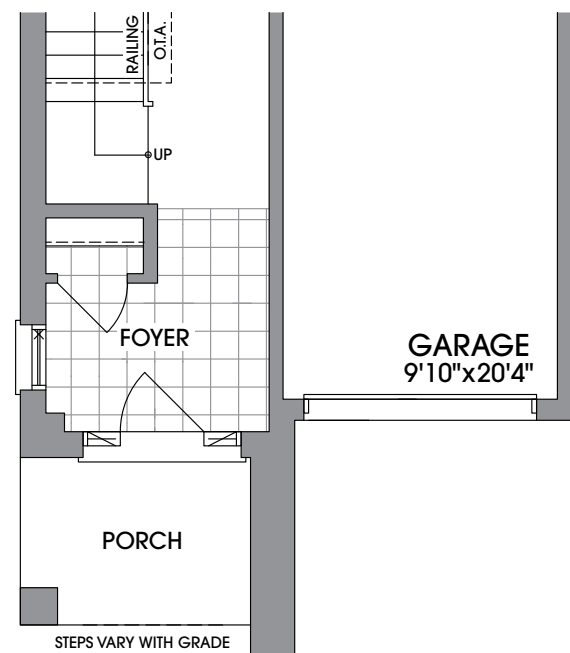
*The Trails*  
 of  
 COUNTRY LANE



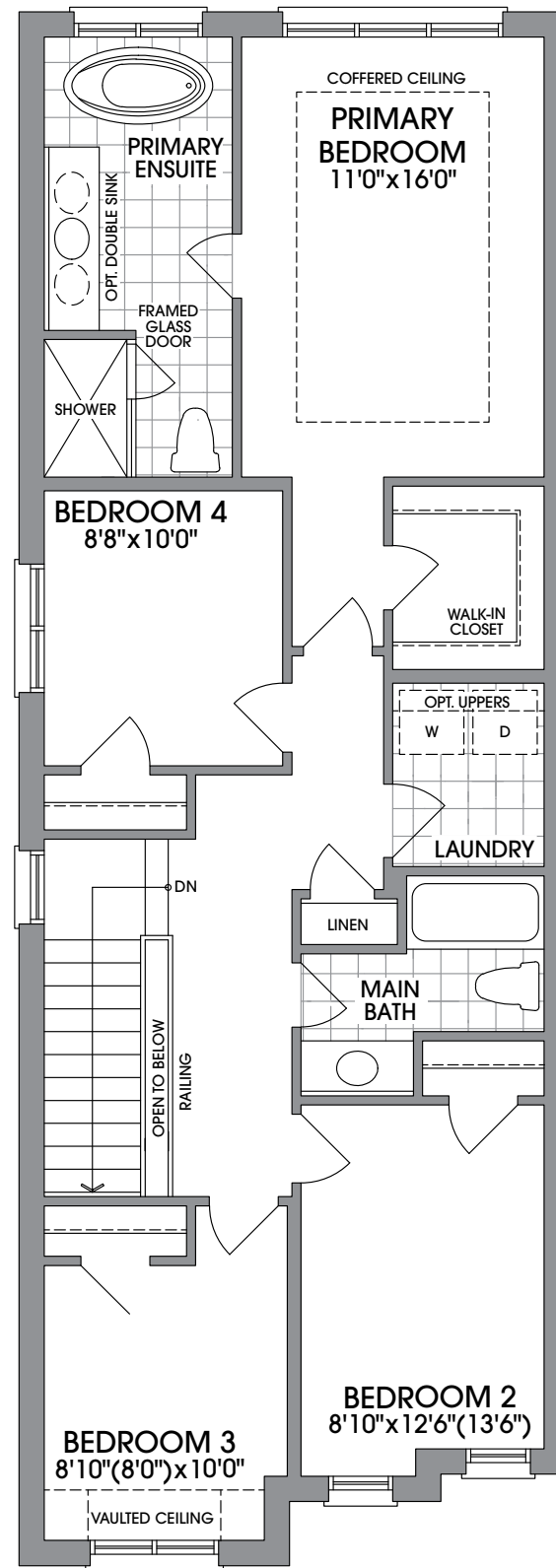
MAIN LEVEL ELEVATION A



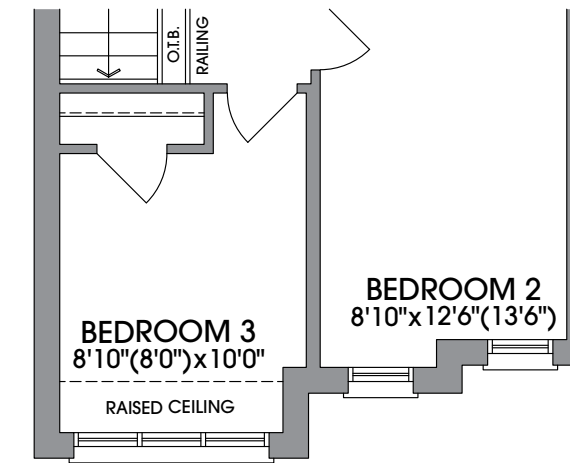
MAIN LEVEL ELEVATION B



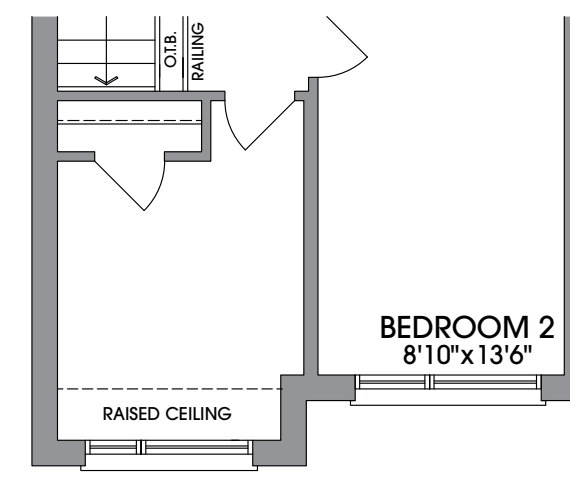
MAIN LEVEL ELEVATION C



UPPER LEVEL ELEVATION A

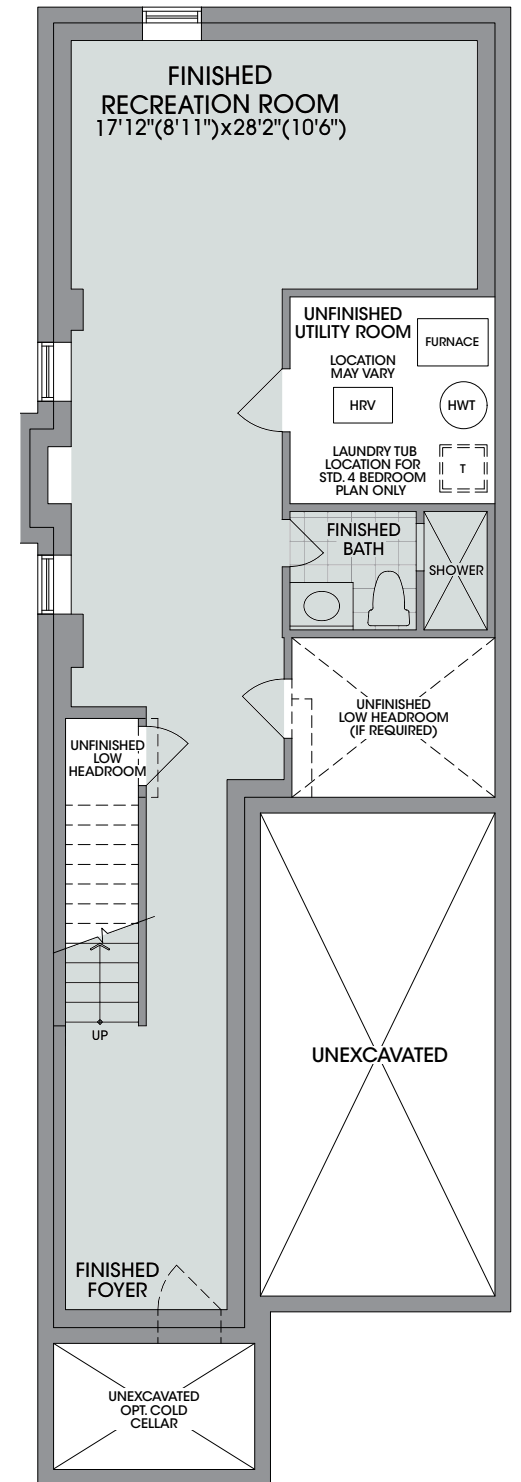


UPPER LEVEL ELEVATION B

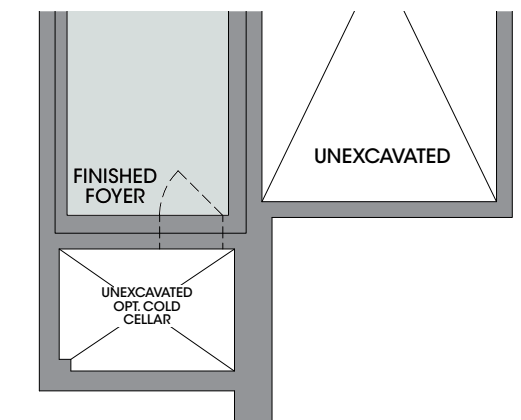


UPPER LEVEL ELEVATION C

**INCLUDES FINISHED AREA IN THE BASEMENT**



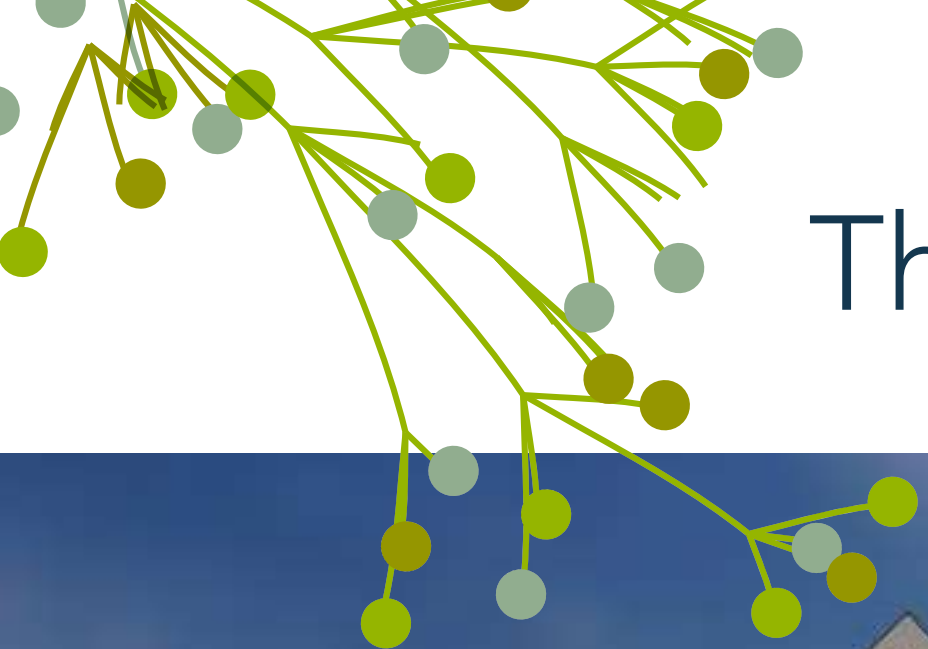
FINISHED BASEMENT ELEVATION A & B



ELEVATION C

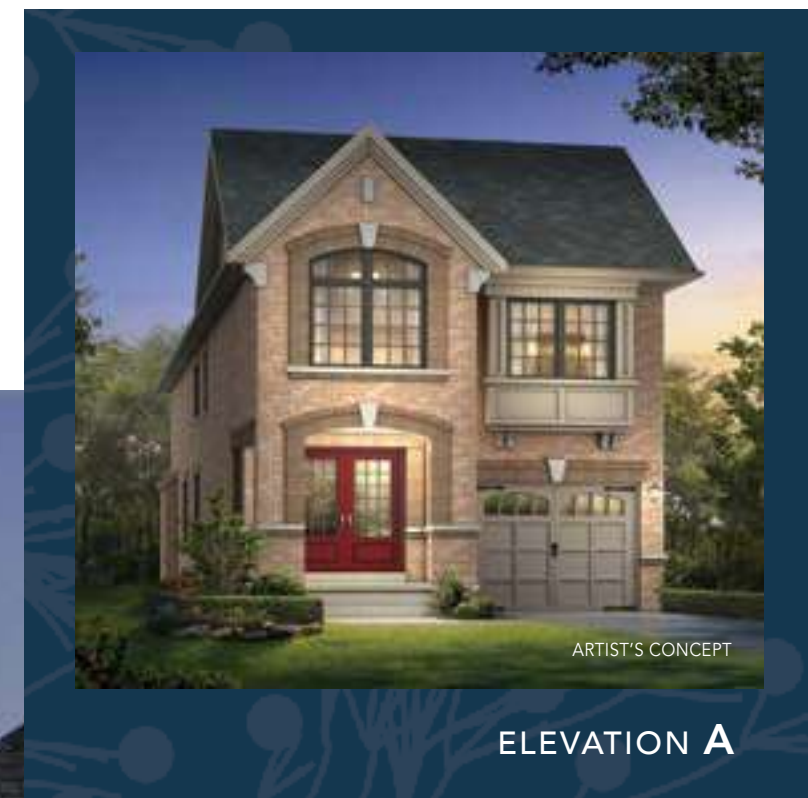
**FLOORPLANS & ELEVATIONS ARE FINAL AND NOT SUBJECT TO CUSTOMIZATION AT TIME OF SALE OR THROUGH THE DECOR STUDIO** Floorplans and elevations are not to scale and subject to architectural review/revision including without limitation, the house being constructed with a layout that is the reverse of that set out above. All materials, specifications, details and dimensions, if any, are approximate and subject to change without notice in order to comply with building site conditions and municipal, structural, Vendor and/or architectural requirements. Actual usable floor area may vary from the stated floor area in accordance with the Floor Area Calculations Directive dated February 1, 2021 published by the Housing Construction Regulatory Authority. Location of structural and mechanical elements may vary from what is shown. Bulkheads are not shown on this plan and may be in areas of the Unit as required to provide venting and mechanical systems. Door and window location, type, size, and swing may vary without notice. Homes are sold unfurnished. If applicable, balconies, terraces, and patios, if any, are exclusive use common elements, shown for display purposes only and the location and size are subject to change without notice. E. & O.E. 20231005\_R3\_





# The Ashberry (26-2)

ELEVATION **A** - 4 BEDROOM - **2,240** SQ. FT.  
ELEVATION **B** - 4 BEDROOM - **2,237** SQ. FT.  
ELEVATION **C** - 4 BEDROOM - **2,230** SQ. FT.



# The Ashberry

(26-2)

ELEVATION A  
4 BED – 2,240 SQ. FT.

ELEVATION B  
4 BED – 2,237 SQ. FT.

ELEVATION C  
4 BED – 2,230 SQ. FT.



ELEVATION A

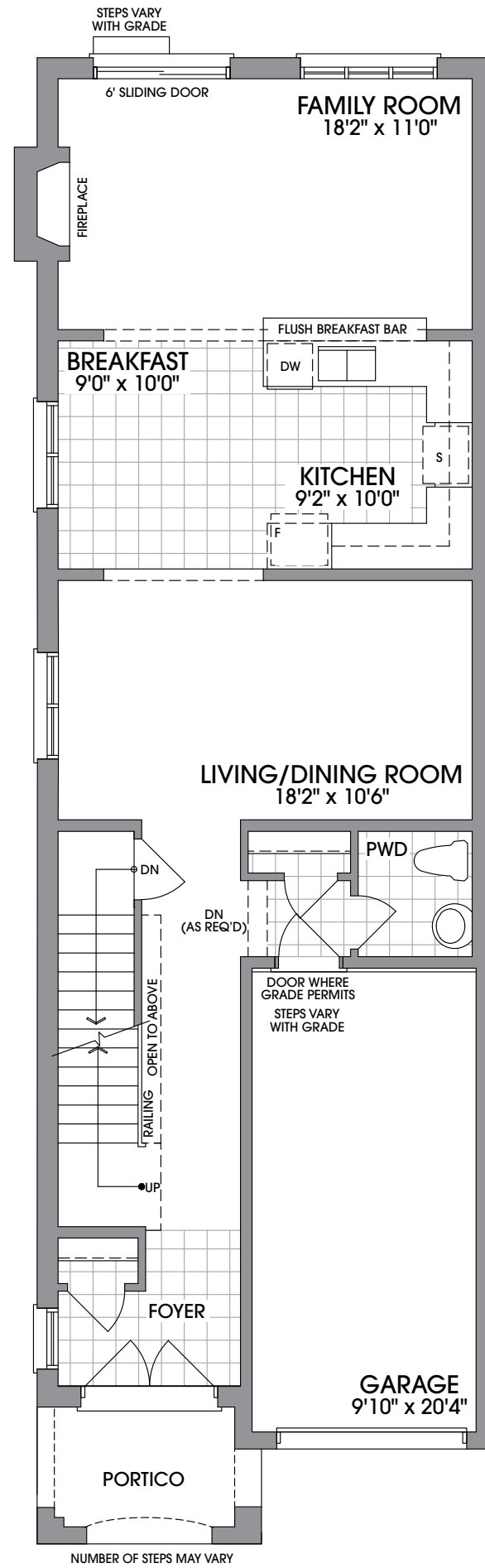


ELEVATION B

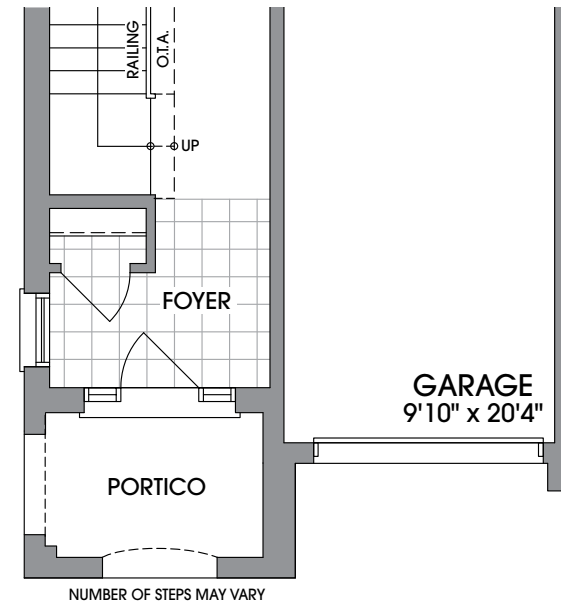


ELEVATION C

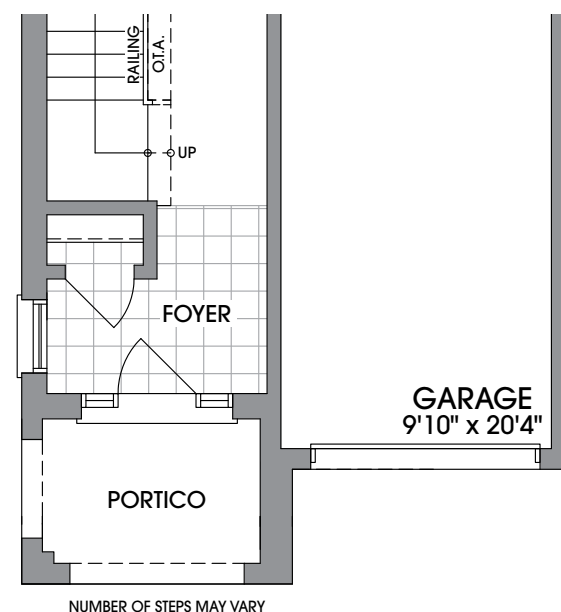
The Trails  
of  
COUNTRY LANE



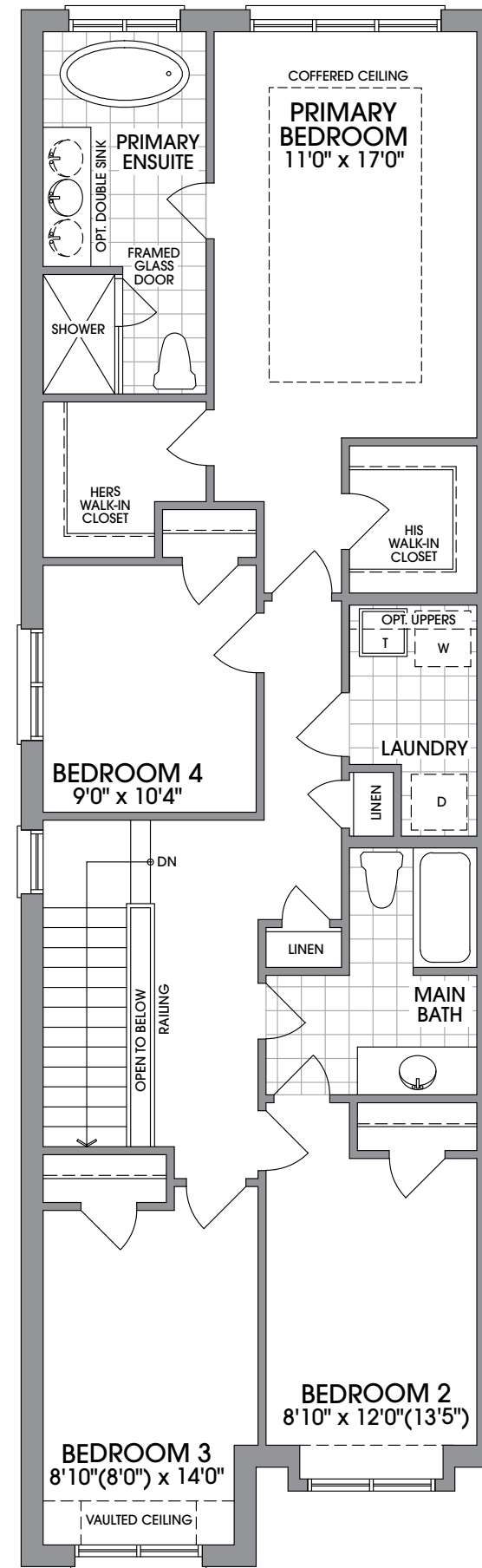
MAIN LEVEL  
ELEVATION A



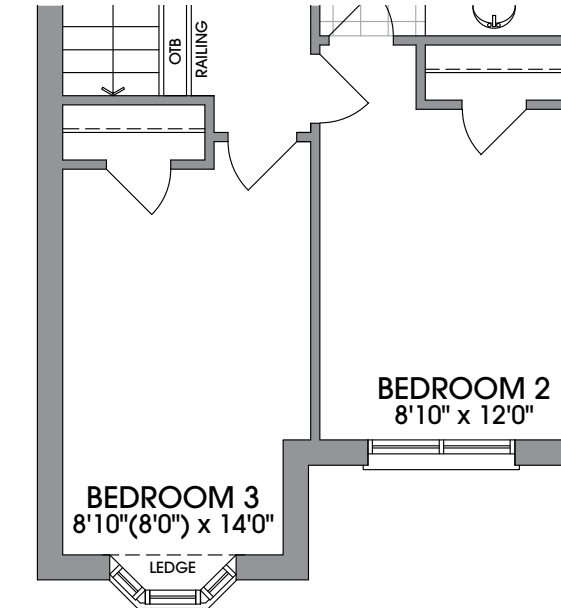
MAIN LEVEL  
ELEVATION B



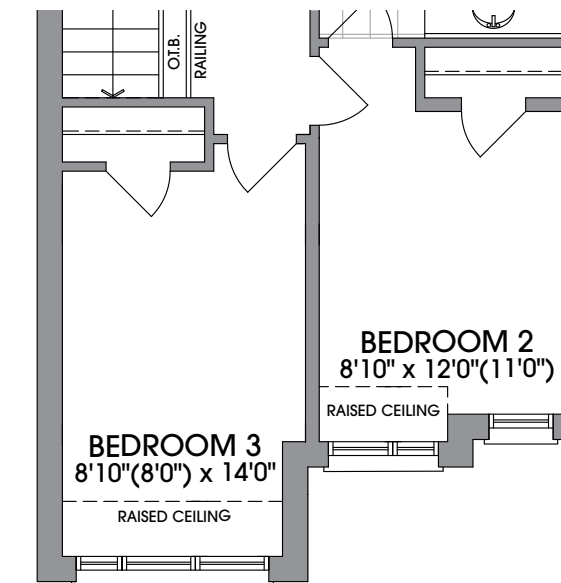
MAIN LEVEL  
ELEVATION C



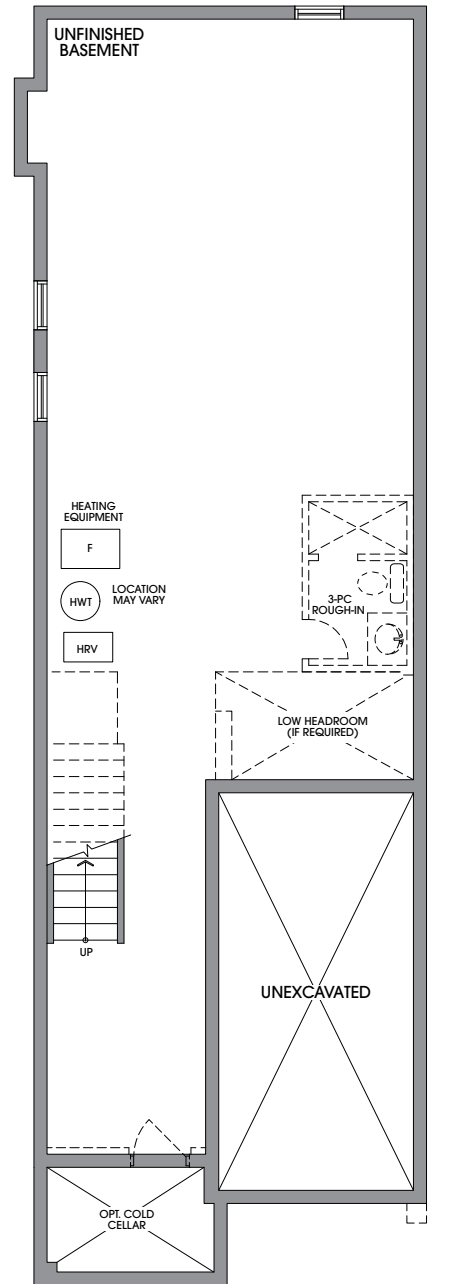
UPPER LEVEL  
ELEVATION A



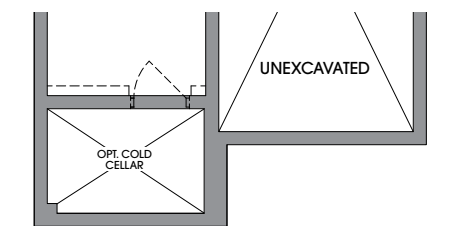
UPPER LEVEL  
ELEVATION B



UPPER LEVEL  
ELEVATION C



BASEMENT  
ELEVATION A & B



BASEMENT  
ELEVATION C

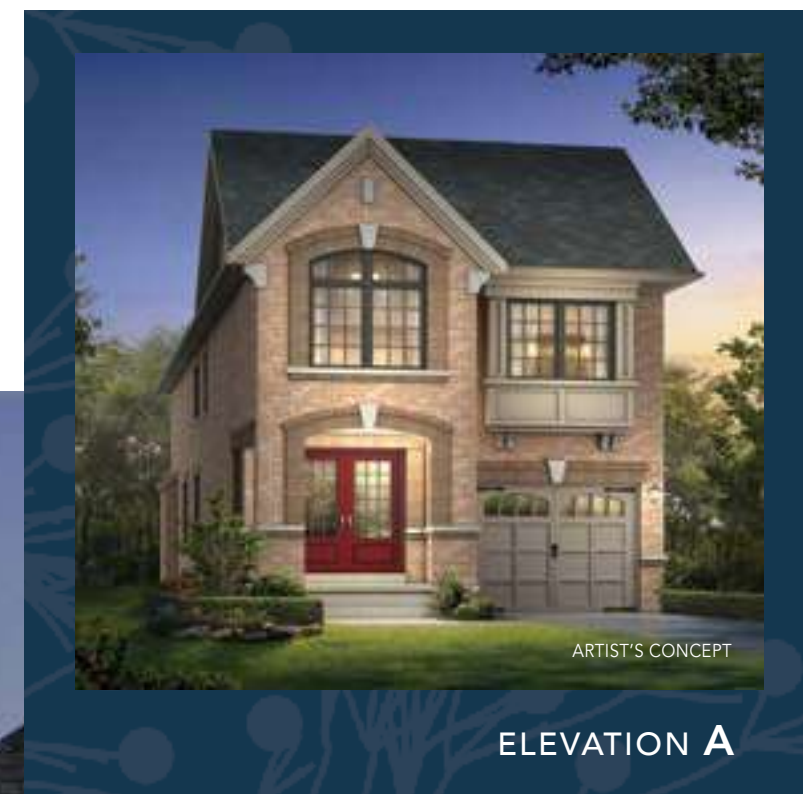
FLOORPLANS & ELEVATIONS ARE FINAL AND NOT SUBJECT TO CUSTOMIZATION AT TIME OF SALE OR THROUGH THE DECOR STUDIO. Floorplans and elevations are not to scale and subject to architectural review/revision including without limitation, the house being constructed with a layout that is the reverse of that set out above. All materials, specifications, details and dimensions, if any, are approximate and subject to change without notice in order to comply with building site conditions and municipal, structural, Vendor and/or architectural requirements. Actual usable floor area may vary from the stated floor area in accordance with the Floor Area Calculations Directive dated February 1, 2021 published by the Housing Construction Regulatory Authority. Location of structural and mechanical elements may vary from what is shown. Bulkheads are not shown on this plan and may be in areas of the Unit as required to provide venting and mechanical systems. Door and window location, type, size, and swing may vary without notice. Homes are sold unfurnished. If applicable, balconies, terraces, and patios, if any, are exclusive use common elements, shown for display purposes only and the location and size are subject to change without notice. E. & O.E. 20230512\_IFS



INCLUDES  
FINISHED  
AREA IN THE  
BASEMENT

# The Ashberry Plus (26-2)

ELEVATION **A** – 4 BEDROOM – **2,983** SQ. FT.  
ELEVATION **B** – 4 BEDROOM – **2,980** SQ. FT.  
ELEVATION **C** – 4 BEDROOM – **2,973** SQ. FT.  
(INCLUDES 743 SQ. FT. OF FINISHED AREA IN BASEMENT)



ELEVATION B



ELEVATION C

# The Ashberry Plus (26-2)

ELEVATION A  
4 BED – 2,983 SQ. FT.

ELEVATION B  
4 BED – 2,980 SQ. FT.

ELEVATION C  
4 BED – 2,973 SQ. FT.

(INCL. 743 SQ. FT. FINISHED BSMT.)



ELEVATION A

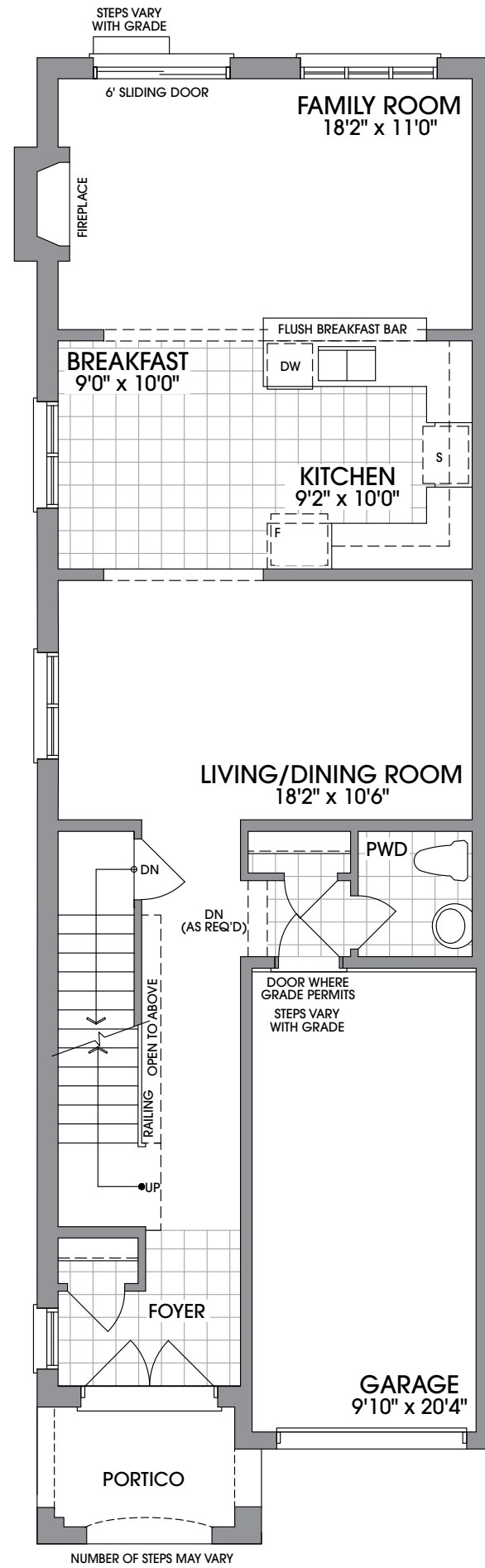


ELEVATION B

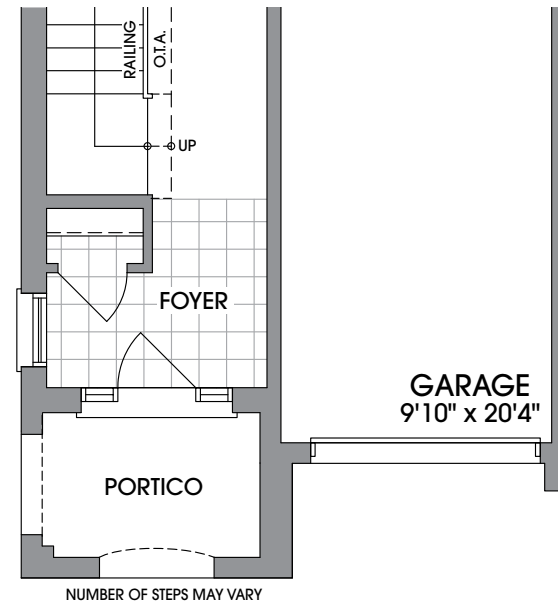


ELEVATION C

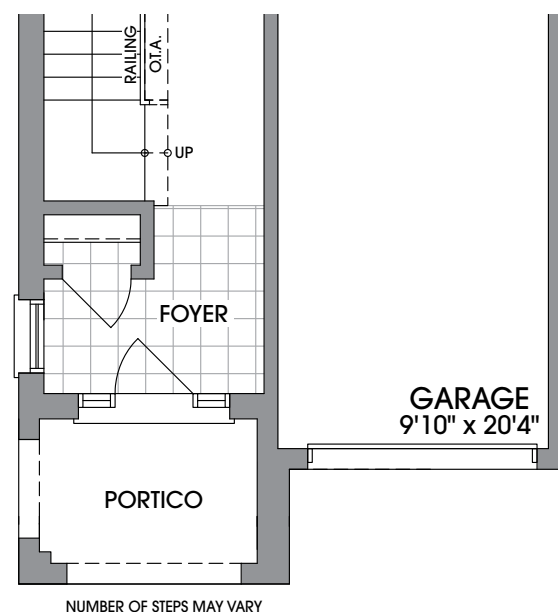
The Trails  
of  
COUNTRY LANE



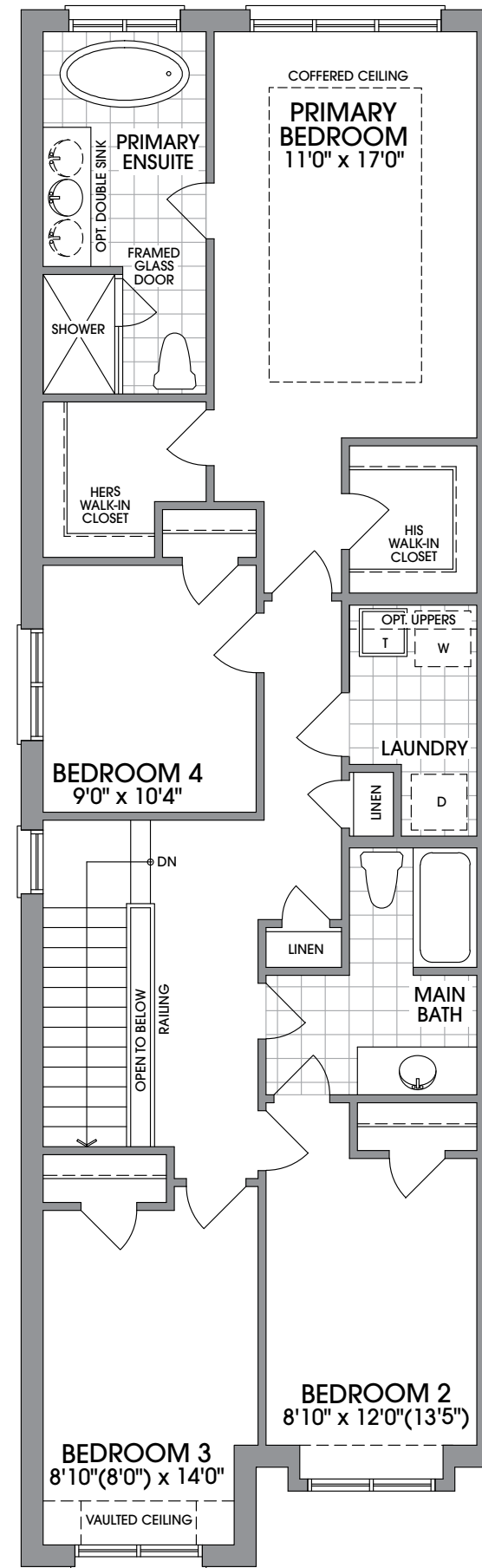
MAIN LEVEL  
ELEVATION A



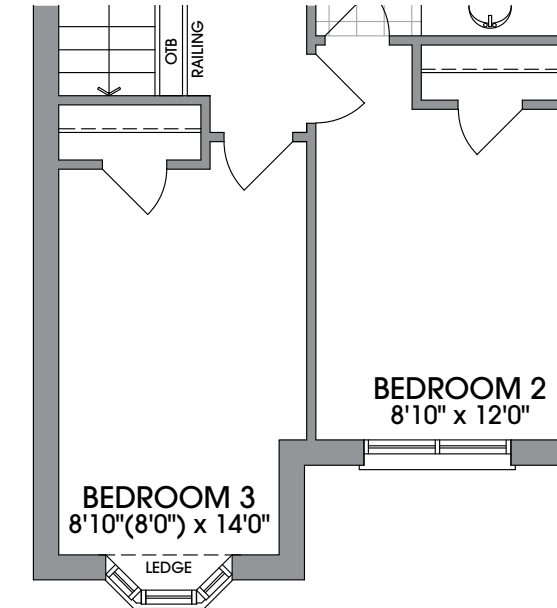
MAIN LEVEL  
ELEVATION B



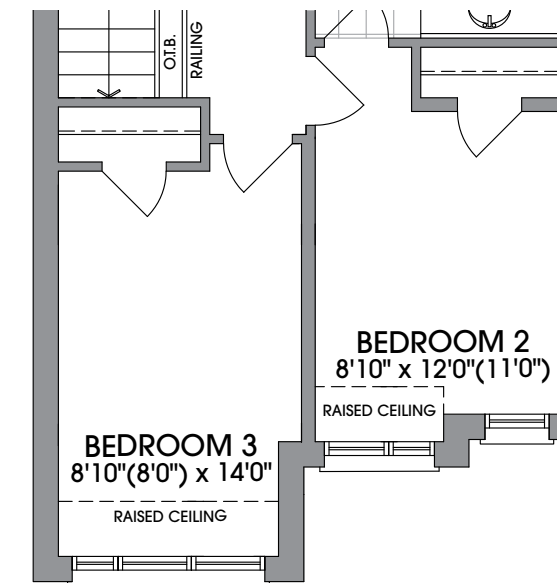
MAIN LEVEL  
ELEVATION C



UPPER LEVEL  
ELEVATION A

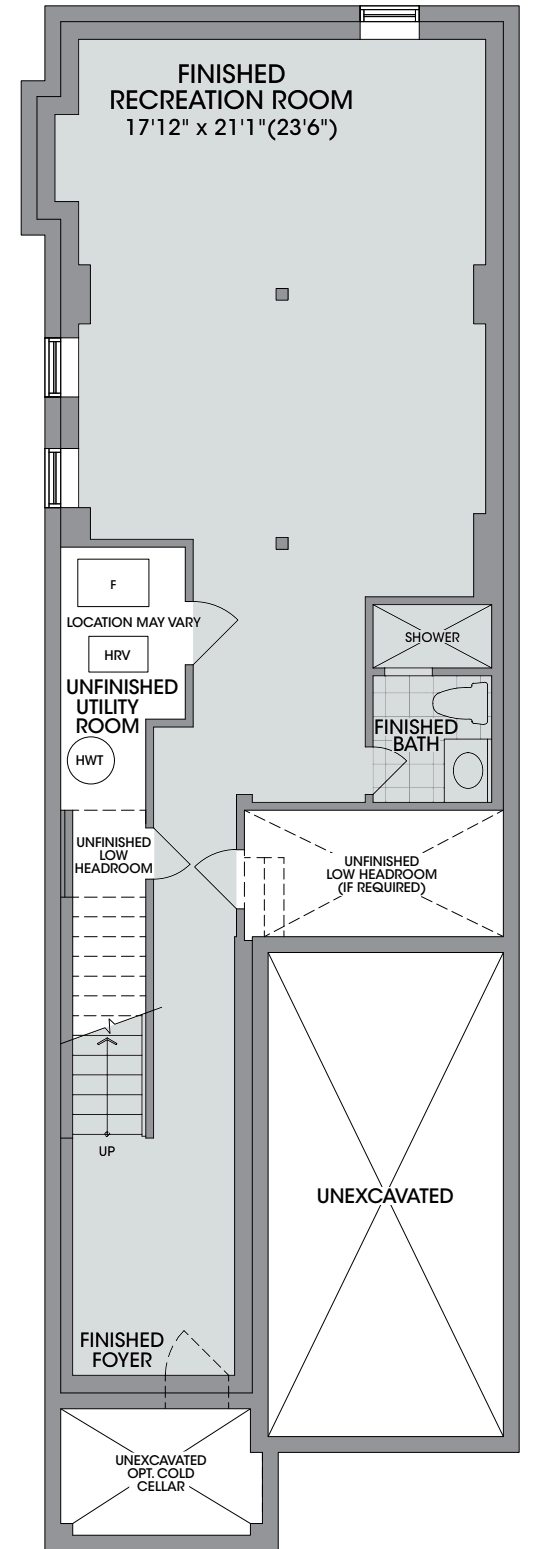


UPPER LEVEL  
ELEVATION B

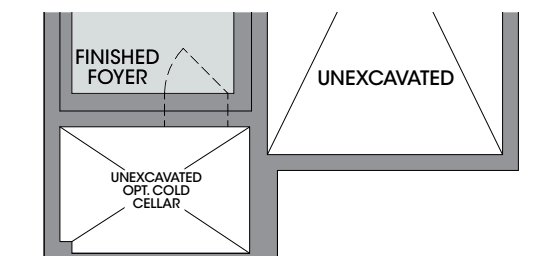


UPPER LEVEL  
ELEVATION C

**INCLUDES  
FINISHED  
AREA IN THE  
BASEMENT**



FINISHED BASEMENT  
ELEVATION A



FINISHED BASEMENT  
ELEVATION B & C

**FLOORPLANS & ELEVATIONS ARE FINAL AND NOT SUBJECT TO CUSTOMIZATION AT TIME OF SALE OR THROUGH THE DECOR STUDIO** Floorplans and elevations are not to scale and subject to architectural review/revision including without limitation, the house being constructed with a layout that is the reverse of that set out above. All materials, specifications, details and dimensions, if any, are approximate and subject to change without notice in order to comply with building site conditions and municipal, structural, Vendor and/or architectural requirements. Actual usable floor area may vary from the stated floor area in accordance with the Floor Area Calculations Directive dated February 1, 2021 published by the Housing Construction Regulatory Authority. Location of structural and mechanical elements may vary from what is shown. Bulkheads are not shown on this plan and may be in areas of the Unit as required to provide venting and mechanical systems. Door and window location, type, size, and swing may vary without notice. Homes are sold unfurnished. If applicable, balconies, terraces, and patios, if any, are exclusive use common elements, shown for display purposes only and the location and size are subject to change without notice. E. & O.E. 20230512\_IFS





# The Ashberry **S** (26-2 **S**)

ELEVATION **A** - 4 BEDROOM - **2,220** SQ. FT.  
ELEVATION **B** - 4 BEDROOM - **2,217** SQ. FT.  
ELEVATION **C** - 4 BEDROOM - **2,209** SQ. FT.



**26-2 ELEVATION A**  
**26-2 **S** SIMILAR**  
*Please see floor plan page.*



ARTIST'S CONCEPT



ARTIST'S CONCEPT

**26-2 ELEVATION B**  
**26-2 **S** SIMILAR**  
*Please see floor plan page.*

**26-2 ELEVATION C**  
**26-2 **S** SIMILAR**  
*Please see floor plan page.*

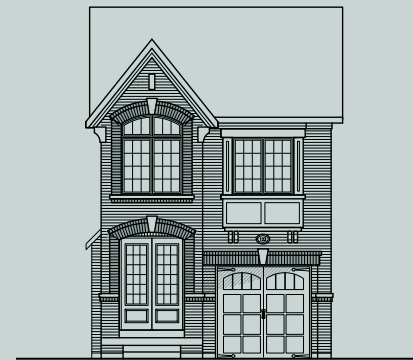
# The Ashberry S

(26-20)

ELEVATION A  
4 BED – 2,220 SQ. FT.

ELEVATION B  
4 BED – 2,217 SQ. FT.

ELEVATION C  
4 BED – 2,209 SQ. FT.



ELEVATION A

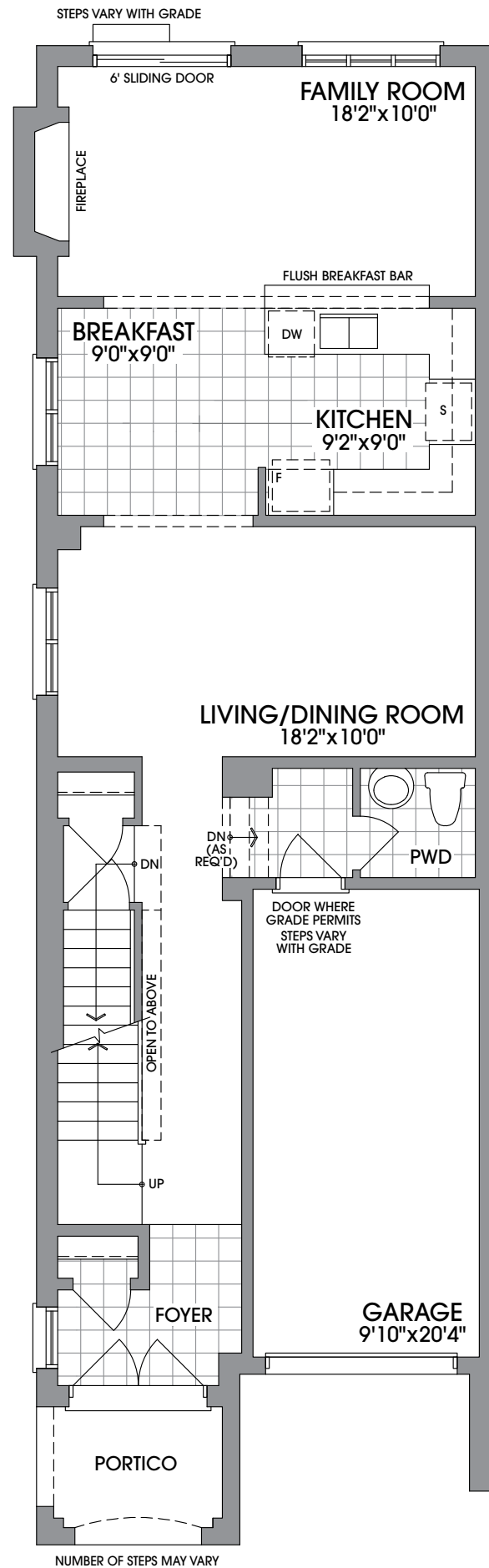


ELEVATION B

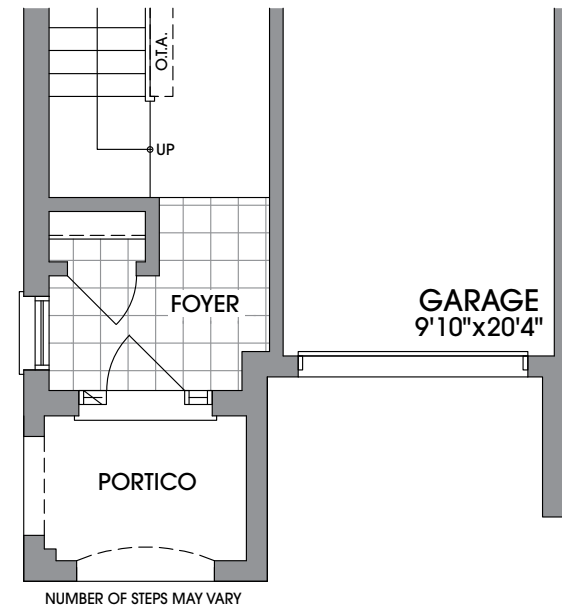


ELEVATION C

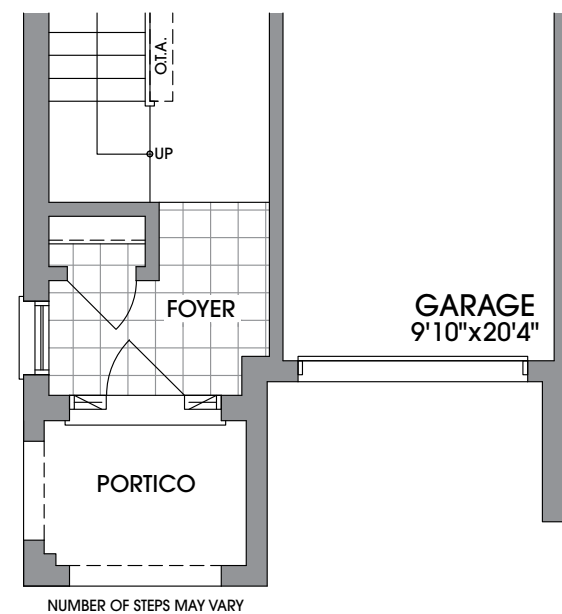
*The Trails*  
of  
COUNTRY LANE



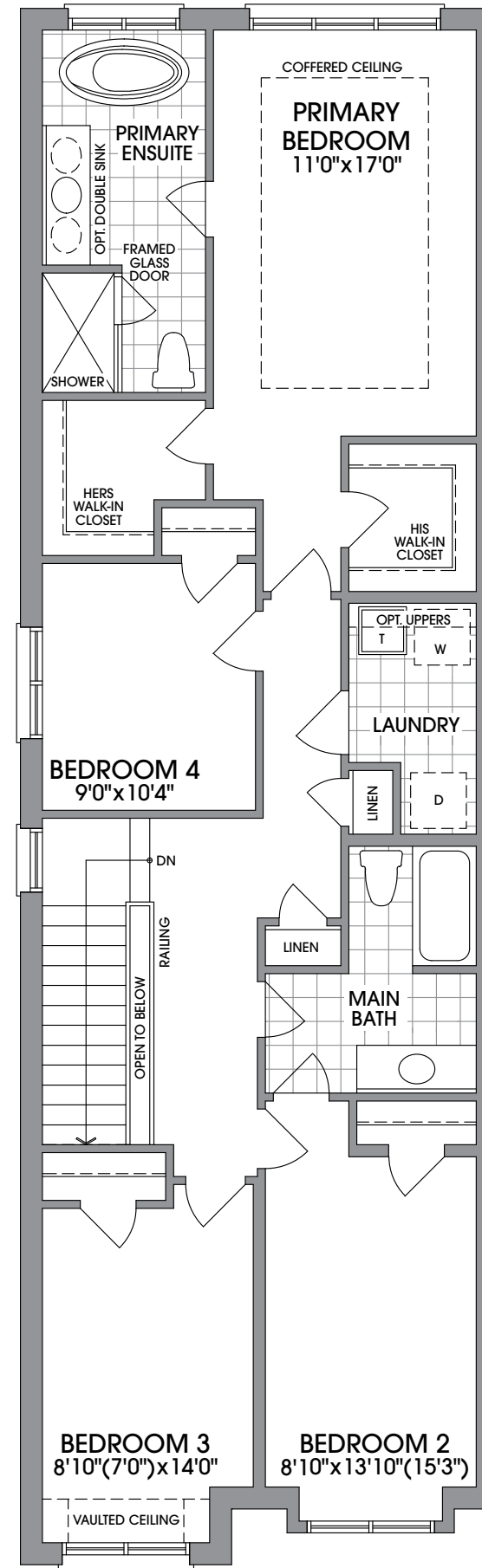
MAIN LEVEL  
ELEVATION A



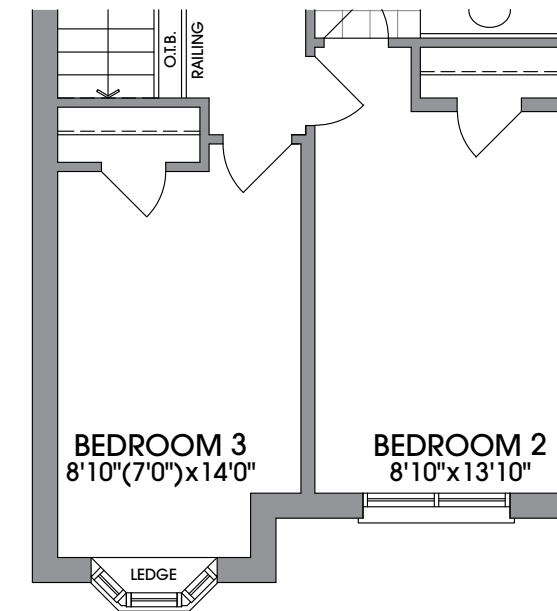
MAIN LEVEL  
ELEVATION B



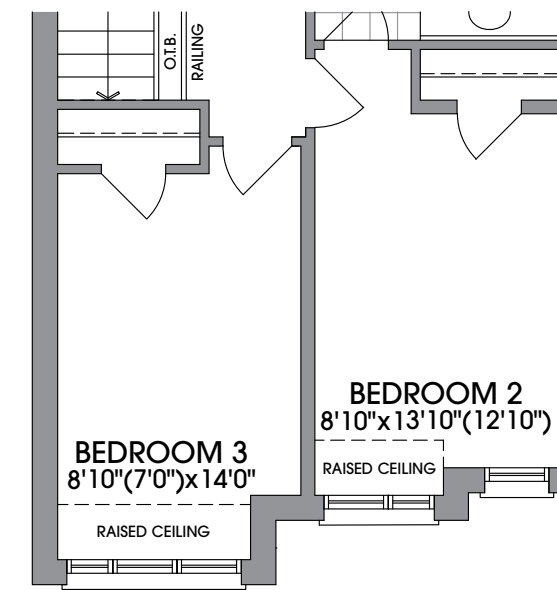
MAIN LEVEL  
ELEVATION C



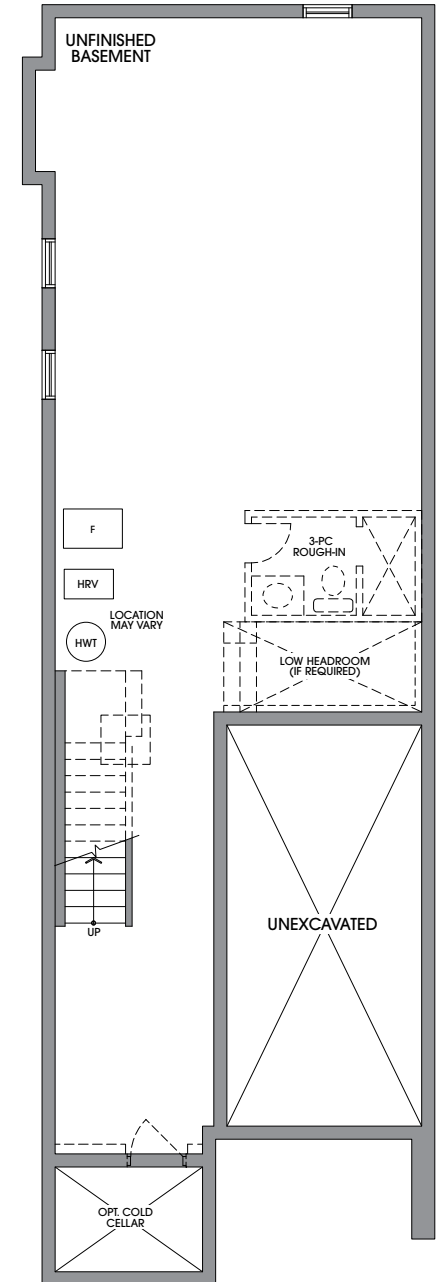
UPPER LEVEL  
ELEVATION A



UPPER LEVEL  
ELEVATION B



UPPER LEVEL  
ELEVATION C



BASEMENT  
ELEVATION A, B & C

**FLOORPLANS & ELEVATIONS ARE FINAL AND NOT SUBJECT TO CUSTOMIZATION AT TIME OF SALE OR THROUGH THE DECOR STUDIO** Floorplans and elevations are not to scale and subject to architectural review/revision including without limitation, the house being constructed with a layout that is the reverse of that set out above. All materials, specifications, details and dimensions, if any, are approximate and subject to change without notice in order to comply with building site conditions and municipal, structural, Vendor and/or architectural requirements. Actual usable floor area may vary from the stated floor area in accordance with the Floor Area Calculations Directive dated February 1, 2021 published by the Housing Construction Regulatory Authority. Location of structural and mechanical elements may vary from what is shown. Bulkheads are not shown on this plan and may be in areas of the Unit as required to provide venting and mechanical systems. Door and window location, type, size, and swing may vary without notice. Homes are sold unfurnished. If applicable, balconies, terraces, and patios, if any, are exclusive use common elements, shown for display purposes only and the location and size are subject to change without notice. E. & O.E. 20231005\_R3\_



INCLUDES  
FINISHED  
AREA IN THE  
BASEMENT

# The Ashberry Plus **S** (26-2 **S**)

ELEVATION **A** – 4 BEDROOM – 2,929 SQ. FT.  
ELEVATION **B** – 4 BEDROOM – 2,926 SQ. FT.  
ELEVATION **C** – 4 BEDROOM – 2,918 SQ. FT.  
(INCLUDES 709 SQ. FT. OF FINISHED AREA IN BASEMENT)



ARTIST'S CONCEPT

26-2 ELEVATION **A**  
26-2 **S** SIMILAR  
Please see floor plan page.



ARTIST'S CONCEPT



ARTIST'S CONCEPT

26-2 ELEVATION **B**  
26-2 **S** SIMILAR  
Please see floor plan page.

26-2 ELEVATION **C**  
26-2 **S** SIMILAR  
Please see floor plan page.

# The Ashberry Plus S

ELEVATION A  
4 BED – 2,929 SQ. FT.

ELEVATION B  
4 BED – 2,926 SQ. FT.

ELEVATION C  
4 BED – 2,918 SQ. FT.

(INC. 709 SQ. FT. FINISHED BSMT.)



ELEVATION A

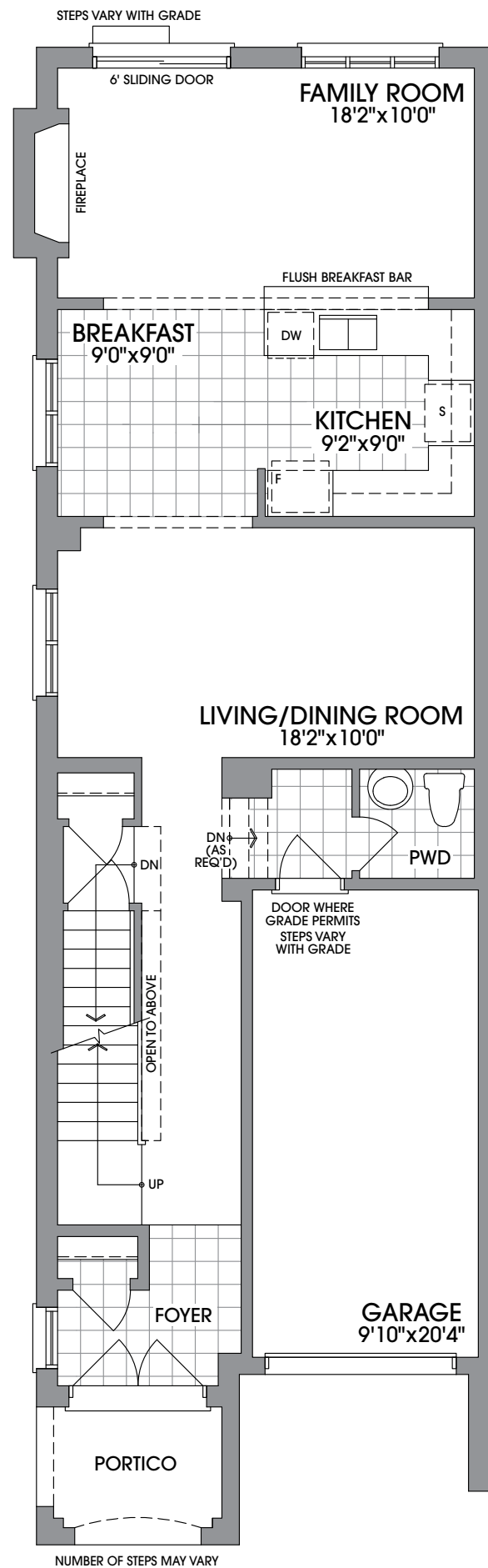


ELEVATION B

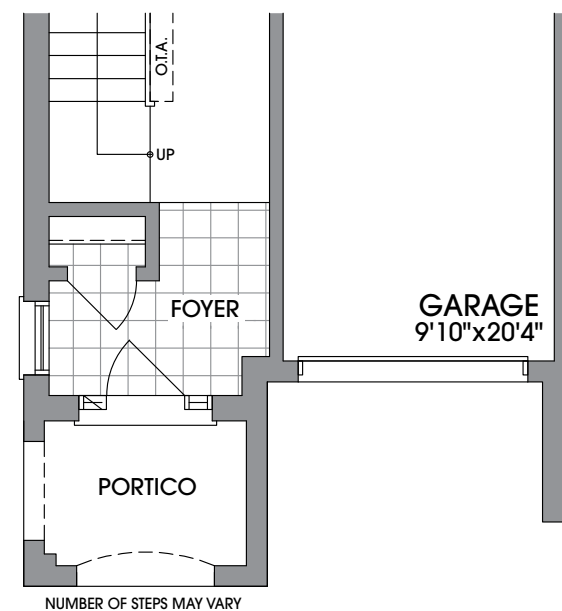


ELEVATION C

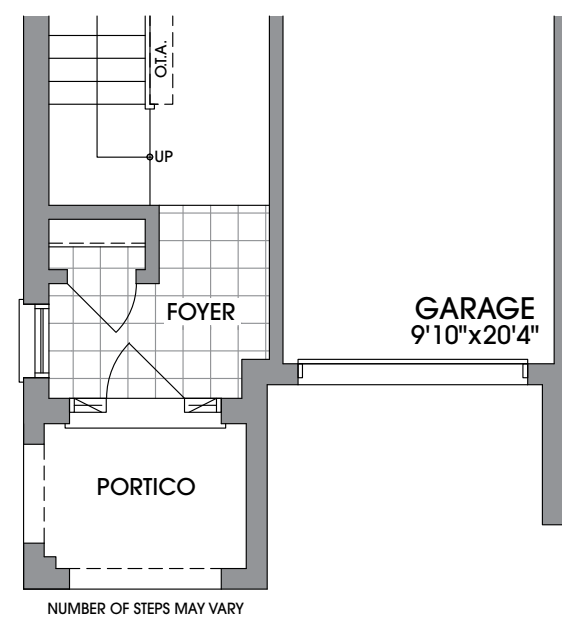
*The Trails*  
of  
COUNTRY LANE



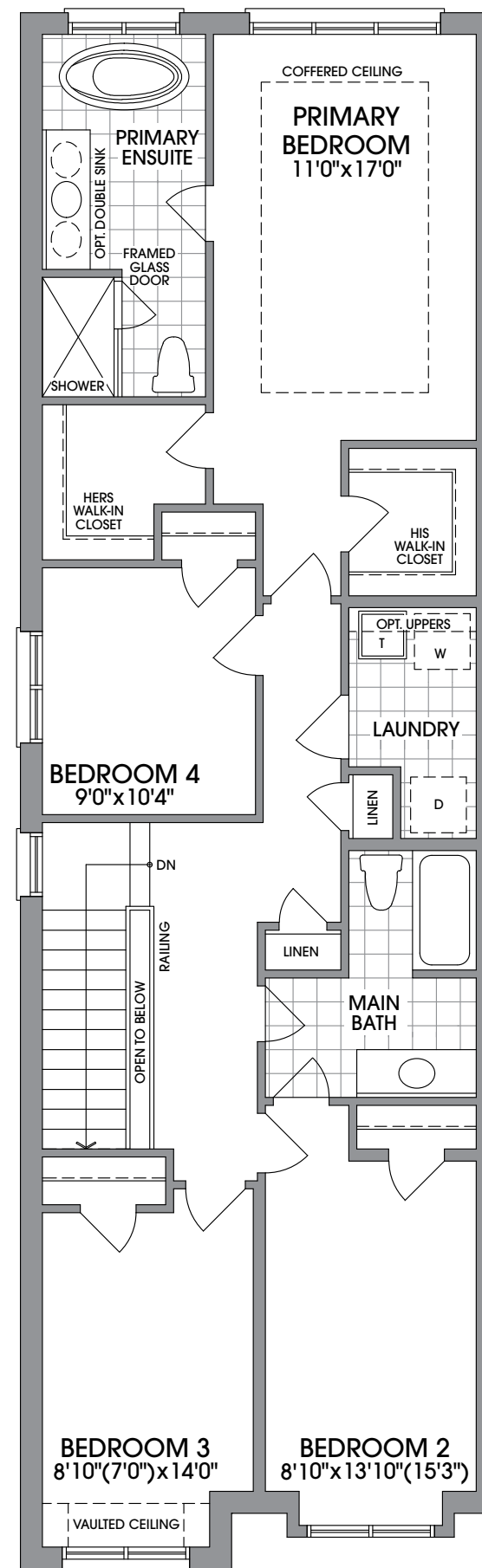
MAIN LEVEL  
ELEVATION A



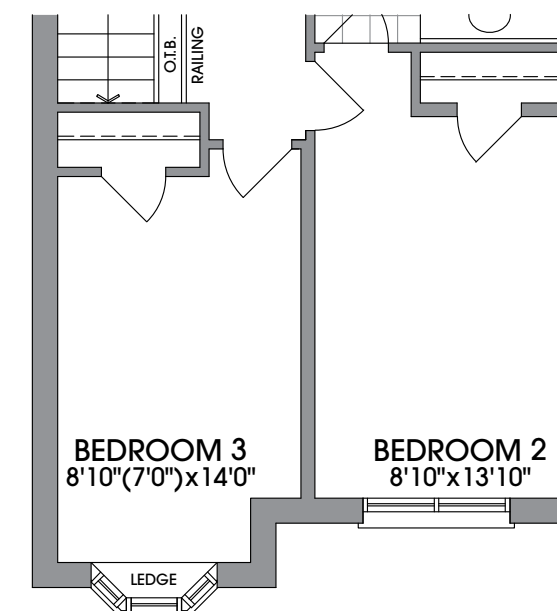
MAIN LEVEL  
ELEVATION B



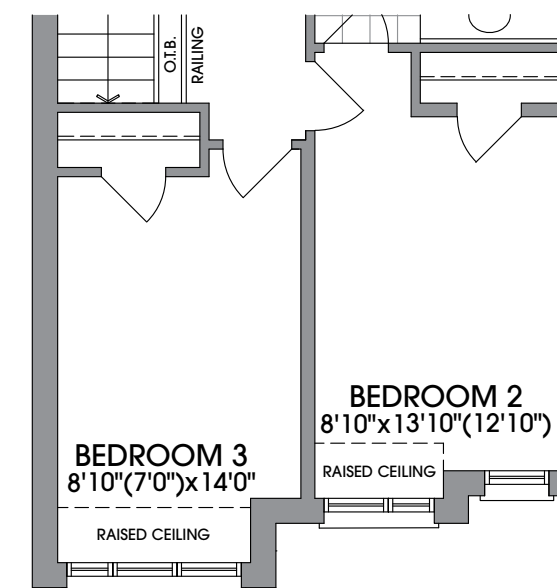
MAIN LEVEL  
ELEVATION C



UPPER LEVEL  
ELEVATION A

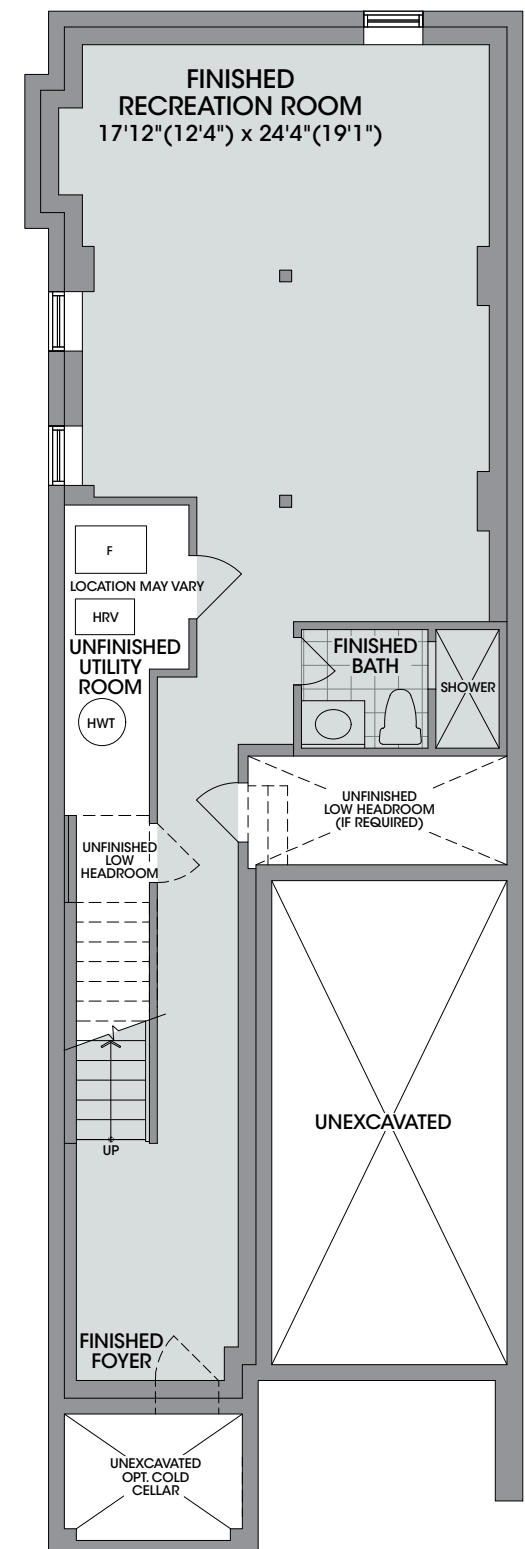


UPPER LEVEL  
ELEVATION B

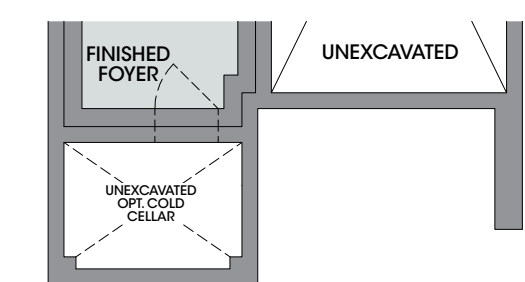


UPPER LEVEL  
ELEVATION C

**INCLUDES  
FINISHED  
AREA IN THE  
BASEMENT**



FINISHED BASEMENT  
ELEVATION A



FINISHED BASEMENT  
ELEVATION B & C

**FLOORPLANS & ELEVATIONS ARE FINAL AND NOT SUBJECT TO CUSTOMIZATION AT TIME OF SALE OR THROUGH THE DECOR STUDIO** Floorplans and elevations are not to scale and subject to architectural review/revision including without limitation, the house being constructed with a layout that is the reverse of that set out above. All materials, specifications, details and dimensions, if any, are approximate and subject to change without notice in order to comply with building site conditions and municipal, structural, Vendor and/or architectural requirements. Actual usable floor area may vary from the stated floor area in accordance with the Floor Area Calculations Directive dated February 1, 2021 published by the Housing Construction Regulatory Authority. Location of structural and mechanical elements may vary from what is shown. Bulkheads are not shown on this plan and may be in areas of the Unit as required to provide venting and mechanical systems. Door and window location, type, size, and swing may vary without notice. Homes are sold unfurnished. If applicable, balconies, terraces, and patios, if any, are exclusive use common elements, shown for display purposes only and the location and size are subject to change without notice. E. & O.E. 20231005\_R3\_





As long as people keep dreaming,  
**ANDRIN** will keep building dream homes.

## 30 Years of Making Dreams A Reality

ANDRIN HOMES celebrated its 30th anniversary in 2020 and continues to build one outstanding community after another, with thousands of homes completed across the GTA and beyond.

The acclaim of ANDRIN'S customers is matched by the recognition it has received from the new home industry which honoured the company with a SAM Award for Most Outstanding Mid/High Rise Design.

The cornerstones of the company's success – Superior Quality, Old Fashioned Value, Design Innovation and Exceptional Customer Service – originate from the longstanding principles of the company's founder and President, Peter Smith and partner, the Kerbel Group. The Kerbel Group has been active in every aspect of the real estate market and has been a major developer in the Metropolitan Toronto area since the early 1950's. The company is well respected for its outstanding designs and high quality workmanship, and has an impressive portfolio of prestigious condominium projects and exceptional commercial properties.

Since its inception, Andrin has built in communities across southern Ontario including Vaughan, Markham, Brampton, Mississauga, Oakville, Burlington, Hamilton, Guelph, Kitchener, Bradford, Newmarket, Holland Landing and Whitby. We do more than just build homes...we build vibrant communities. We are proud of our past accomplishments and look toward the future, confident that we have the skills to continue creating quality developments that new home buyers can count on to stand the test of time.





ANDRINHOMES.COM